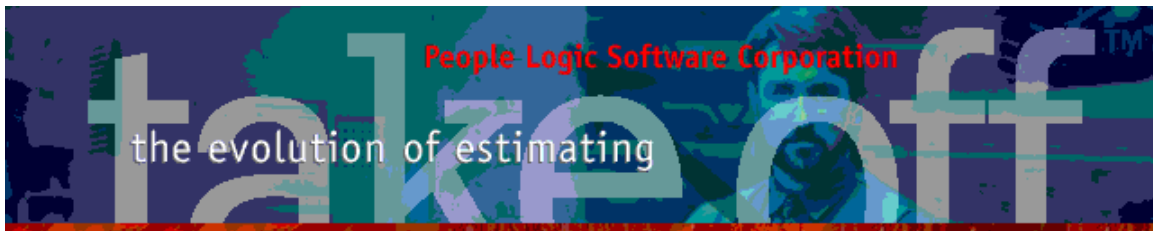


## Update Bulletin 2.10.1.0

Hello

Many updates of the past year have been requested by various users and have finally made their way to your runtime version. A brief summary of the highlights are shown below.

Admin.....	2
Labor .....	2
Material .....	4
Spec-Groups .....	5
Catalog .....	8
Product.....	8
Edit.....	9
Preferences .....	9
Math Stuff - Expression builder .....	10
Excel .....	12
Takeoff.....	13
Grid Alert .....	13
Grid Options .....	15
Grid Quantity Labor1/Labor2.....	15
Location Import/Export .....	16
Material Print .....	17
Word .....	18



## Admin

### Labor

Printing may be filtered by selected Library/Category from outline.

Project Option	Material	Labor		
	Item	Cost	UOM	Site
Starlight Jewellers Manufacturing Cabinet fab Counter fal Millwork fa Miscellaneous Rough mill Setup Site	Assemble case	\$20.00	Hours	
	Assemble drawer	\$20.00	Hours	
	Assemble front	\$20.00	Hours	
	Attach hardware	\$20.00	Hours	
	CNC rout	\$20.00	Hours	
	Edge band	\$20.00	Hours	
	End bore	\$20.00	Hours	
	Line bore	\$20.00	Hours	
	Machine part	\$20.00	Hours	
	Panel saw	\$20.00	Hours	

# People Logic Software

Admin

Labor Cost Table by Library

February 15, 2015

3:31:54PM

Library : Manufacturing

Category : Cabinet fab.

## Labor

Assemble case  
Assemble drawer  
Assemble front  
Attach hardware  
CNC rout  
Edge band  
End bore  
Line bore  
Machine part  
Panel saw

## UOM1

Hours  
Hours  
Hours  
Hours  
Hours  
Hours  
Hours  
Hours  
Hours  
Hours

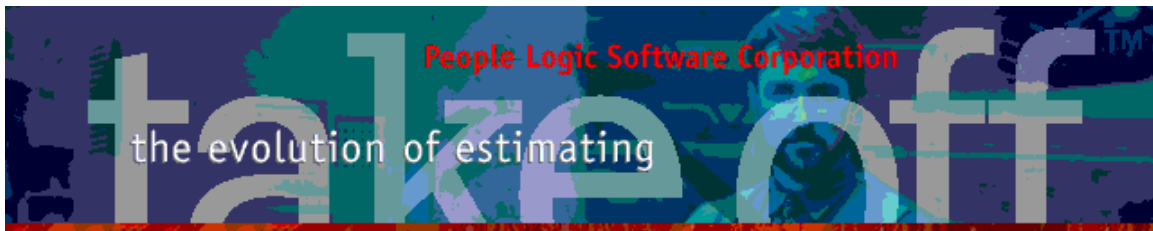
## Unit Cost Convert

\$20.00  
\$20.00  
\$20.00  
\$20.00  
\$20.00  
\$20.00  
\$20.00  
\$20.00  
\$20.00  
\$20.00

## UOM2

8 Days  
8 Days  
8 Days  
8 Days  
8 Days  
8 Days  
8 Days  
8 Days  
8 Days  
8 Days

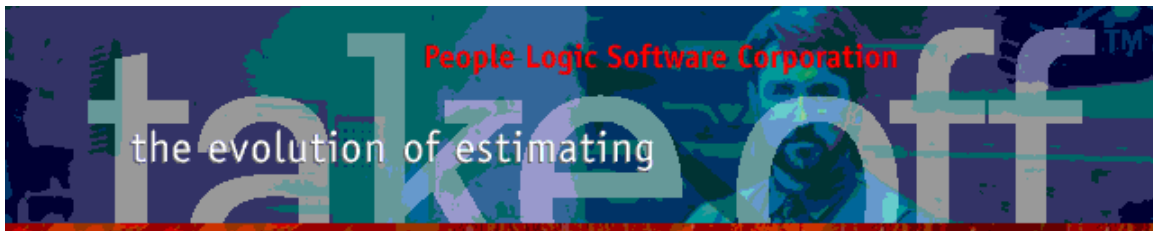
## Indirect



Usage of an individual labor task may be identified per takeoff line item.

Project Option	Material	Labor
Starlight Jewellers	Item	Cost UOM Site
Manufacturing	Assemble case	\$20.00 Hours
Cabinet fab.	Assemble drawer	\$20.00 Hours
Counter fab.	Assemble front	\$20.00 Hours
Millwork fab.	Attach hardware	Hours
Miscellaneous	CNC rout	Hours
Rough mill	Edge band	Hours
Setup	End bore	Hours
Site	Line bore	Hours
	Machine part	Hours
	Panel saw	Hours

Labor hunter	
Labor "Attach hardware" is used in these items:	
Takeoff item:	
Office 1 ItemID: 2 B303	
Office 1 ItemID: 3 B302	
Office 1 ItemID: 4 B302	
Office 1 ItemID: 5 B302	
Office 2 ItemID: 9 B303	
Office 2 ItemID: 10 B302	
Office 2 ItemID: 11 B302	
Office 2 ItemID: 12 B302	
Reception ItemID: 17 B302	
Staff Room ItemID: 21 B224	
Staff Room ItemID: 22 B244	
Staff Room ItemID: 25 w/210	
12 item occurrences.	
7 Hours of Attach hardware	



## Material

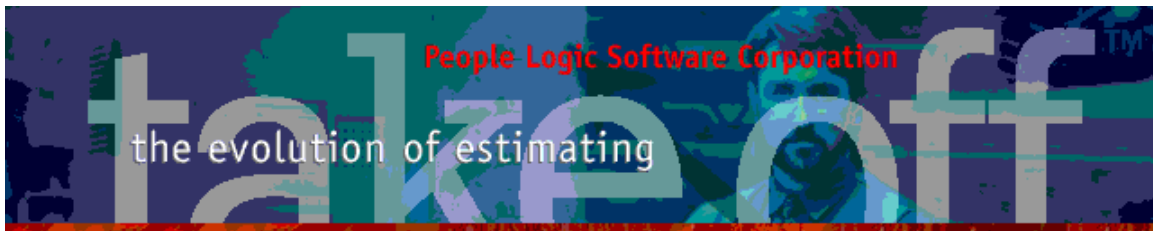
A "Spec" column has been added to indicate materials which are currently linked to a SpecGroup. Thus those not linked are safe to delete. Usage menu will further indicate which SpecGroups are involved.

Project Option		Material		Labor			Spec-Groups					
Starlight Jewellers		Material Name	Cost	UOM	Conversion	UOM2	Waste	Weight	Composite Items	Labor Items	Spec Group	Last Update
+ Buyout		▶ Blum 125 deg clip on	\$2.25	Each		1 Each	0%	0.900			○	January 22
+ Edging		Blum 90 Deg	\$1.27	Each		1 Each	0%					January 22
+ Hardware		Blum mounting plate clip on	\$0.60	Each		1 Each	0%	0.200			○	January 22
+ Fasteners		Blum stamped mtg plate	\$0.46	Each		1 Each	0%					January 22
+ Hinges		Hager 3x3 Butt hinge	\$2.50	Each		1 Each	0%				○	January 22
+ Locks		Mepla 270 deg.	\$8.00	Each		1 Each	0%					January 22
+ Miscellaneous		Mepla mounting plate	\$0.70	Each		1 Each	0%					January 22
+ Pulls		RPC 5 knuckle pin	\$3.50	Each		1 Each	0%					January 22
+ Shelf Fittings												
+ Slides												
+ Sliding track												
+ Lumber												
+ Miscellaneous												
+ Mouldings												

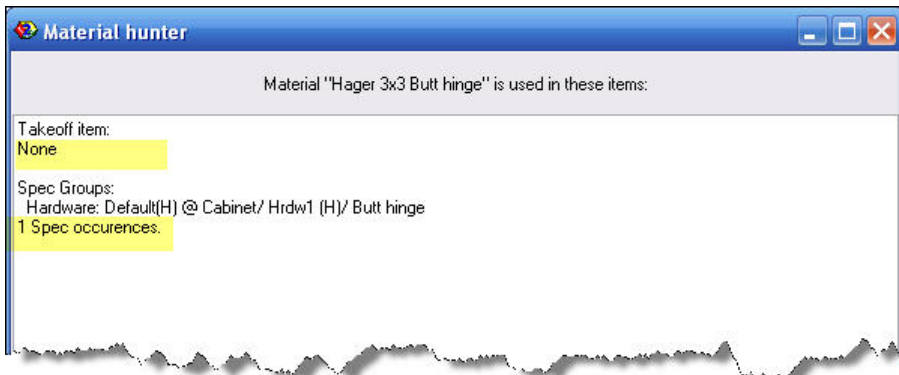
Usage is similar to Labor.

Project Option	Material	Labor			
	Material Name	Cost	UOM	Conversion	UOM2
Starlight Jewellers	Blum 125 deg clip on	\$2.25	Each	1	Each
Buyout	Blum 90 Deg	\$1.27	Each	1	Each
Edging	Blum mounting plate clip on	\$0.60	Each	1	Each
Hardware	Blum stamped mtg plate	\$0.46	Each	1	Each
Fasteners	Hager 3x3 Butt hinge	\$2.50	Each	1	Each
Locks	Mepla 270 deg.	\$8.00	Each	1	Each
Miscellaneous	Mepla mounting plate	\$0.70	Each	1	Each
Pulls	RPC 5 knuckle pin	\$3.50	Each	1	Each
Shelf Fittings					
Slides					
Sliding track					
Lumber					
Miscellaneous					
Mouldings					
Sheet Goods					

Add	Ins
Edit	F2
Delete	Del
SetDefault	
Clone	
Copy	Ctrl+C
Paste	Ctrl+V
Move	
Select All	Ctrl+A
Copy from Above	F4
Expand Full Outline	
Import...	
Print	
Usage	
Help	F1

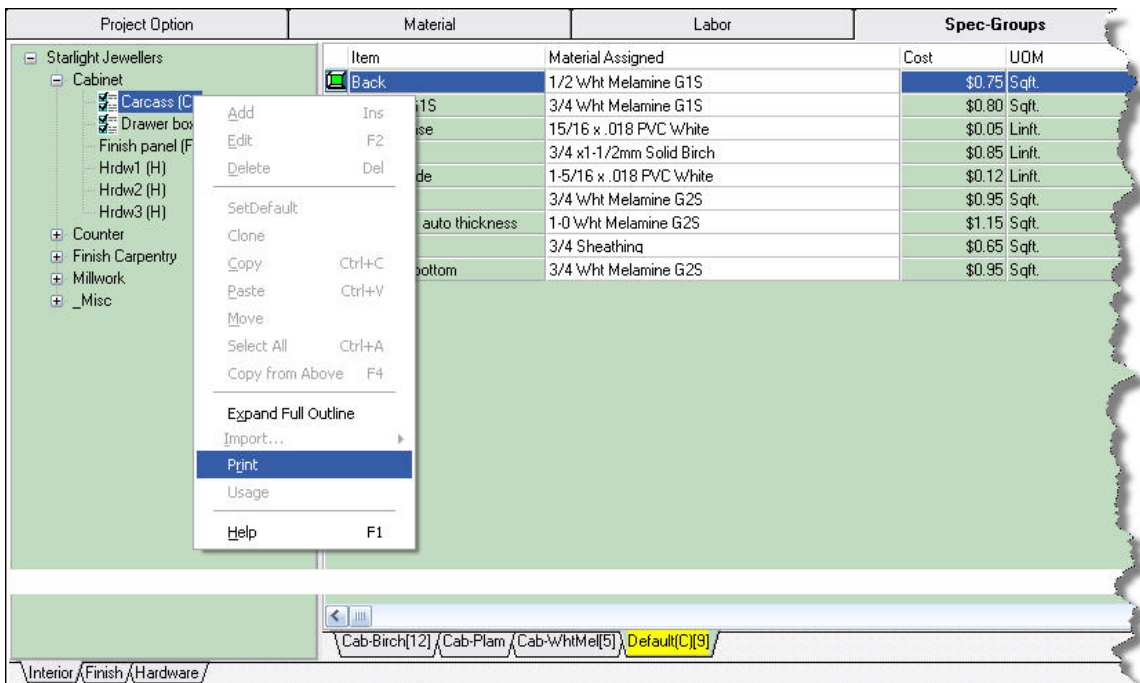


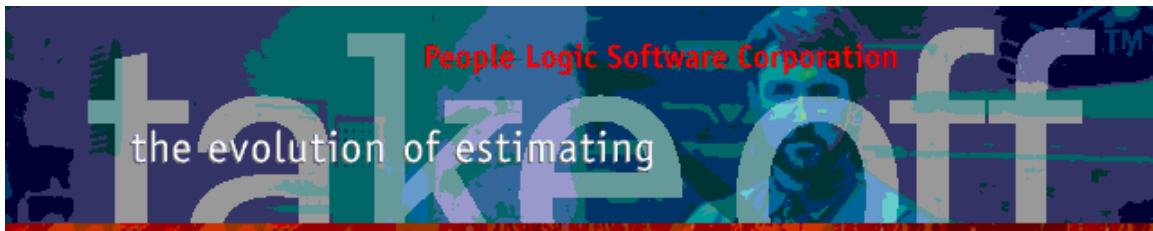
All linked takeoff items and SpecGroups will be shown. In this case the Hager hinge is assigned to one Hardware SpecGroup but no takeoff products reference this hinge.



## Spec-Groups

Filtered printing driven by outline selection is also extended to SpecGroups. Either Library or Category level may be used.





Each Construction group(alias Interior) for Cabinet\Carcass will be printed.

# People Logic Software

Admin

Material Cost by Construction Groups

February 15, 2015

4:12:24PM

## Group : Cab-Birch

Library : Cabinet

Category : Carcass (C)

Component	Material	UOM	Unit Cost	Waste
Back	1/2 Birch G1S	Sqft.	\$1.40	15%
Carcass G1S	3/4 Birch G1S	Sqft.	\$1.55	15%
Edging case	15/16 x .018 PVC Birch	Linft.	\$0.12	0%
Edging lip	3/4 x1-1/2mm Solid Birch	Linft.	\$0.85	0%
Edging wide	1-5/16 x .018 PVC Birch	Linft.	\$0.55	0%
Shelf G2S	3/4 Birch G2S	Sqft.	\$1.71	15%
Shelf G2S auto thickness	1-0 Birch G2S	Sqft.	\$2.03	15%
Spreader	3/4 Sheathing	Sqft.	\$0.65	15%
Wall top/bottom	3/4 Birch G2S	Sqft.	\$1.71	15%

## Group : Cab-Plam

Library : Cabinet

Category : Carcass (C)

Component	Material	UOM	Unit Cost	Waste
Back	PL1 1/2PB Backer	Sqft.	\$1.85	35%
Carcass G1S	PL1 3/4PB Backer	Sqft.	\$2.30	15%
Edging case	15/16 x .018 PVC1	Linft.	\$0.12	0%
Edging lip	3/4 x1-1/2mm Solid Birch	Linft.	\$0.85	0%
Edging wide	1-5/16 x .018 PVC1	Linft.	\$0.50	0%
Shelf G2S	PL1 3/4PB PL1	Sqft.	\$3.40	15%
Shelf G2S auto thickness	PL1 1-0PB PL1	Sqft.	\$4.00	15%
Spreader	3/4 Sheathing	Sqft.	\$0.65	15%
Wall top/bottom	PL1 3/4MDF Liner	Sqft.	\$2.45	15%

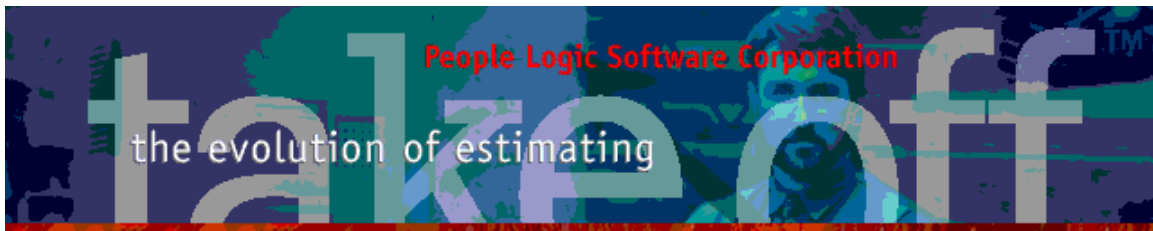
## Group : Cab-WhtMel

Library : Cabinet

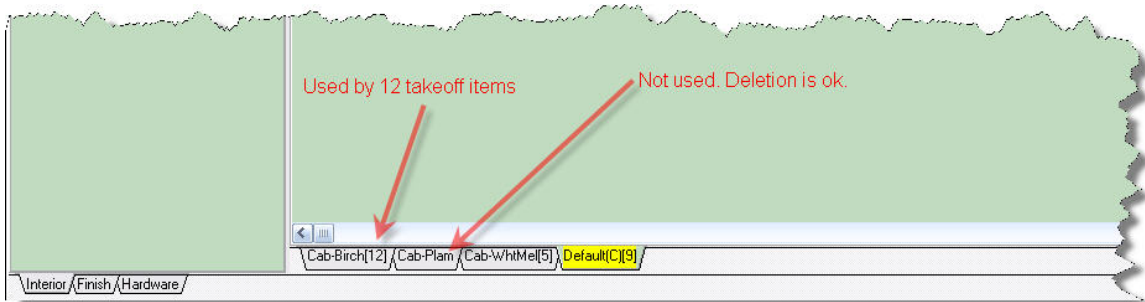
Category : Carcass (C)

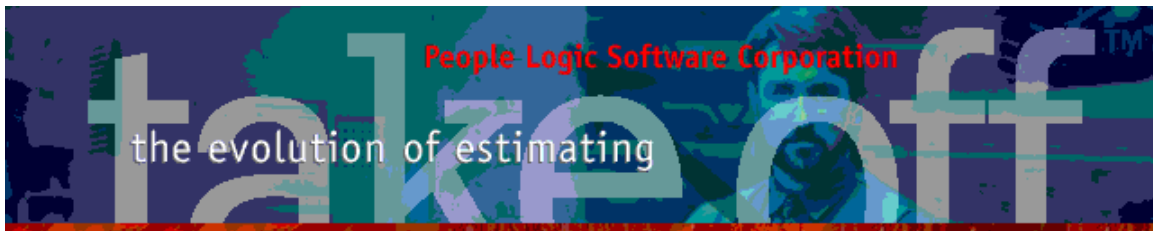
Component	Material	UOM	Unit Cost	Waste
Back	1/2 Wht Melamine G1S	Sqft.	\$0.75	35%
Carcass G1S	3/4 Wht Melamine G1S	Sqft.	\$0.80	15%
Edging case	15/16 x .018 PVC White	Linft.	\$0.05	0%
Edging lip	3/4 x1-1/2mm Solid Birch	Linft.	\$0.85	0%
Edging wide	1-5/16 x .018 PVC White	Linft.	\$0.12	0%
	1 Wht Melamine	Sqft.	\$0.95	





Usage counts of SpecGroups are now indicated directly on TAB labels similar to Catalog|SubItems. Look for the count in brackets at the end of the TAB label. Those SpecGroups not in use will show no number.

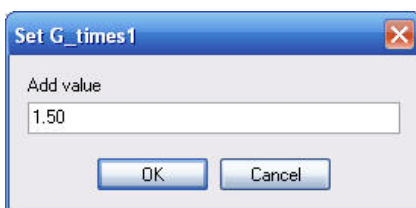
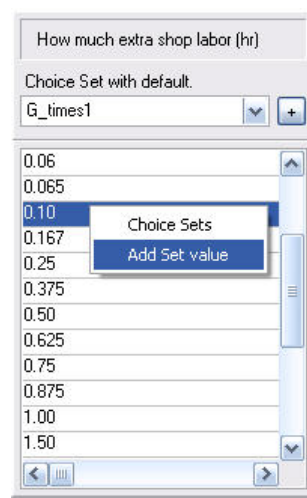
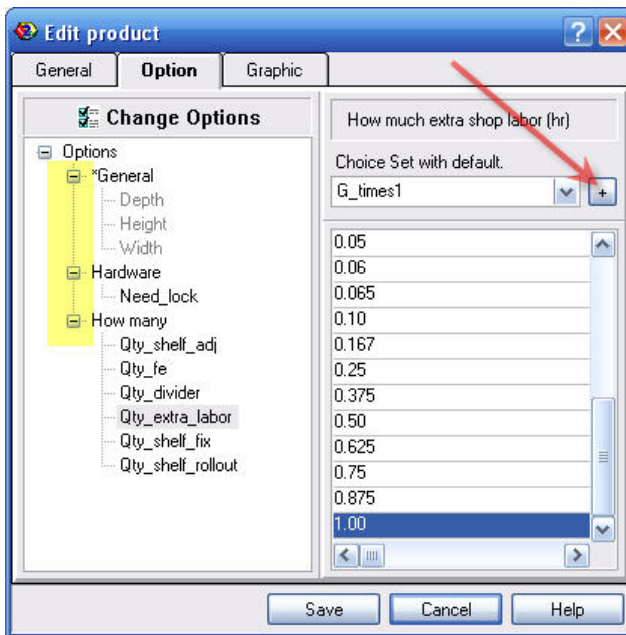




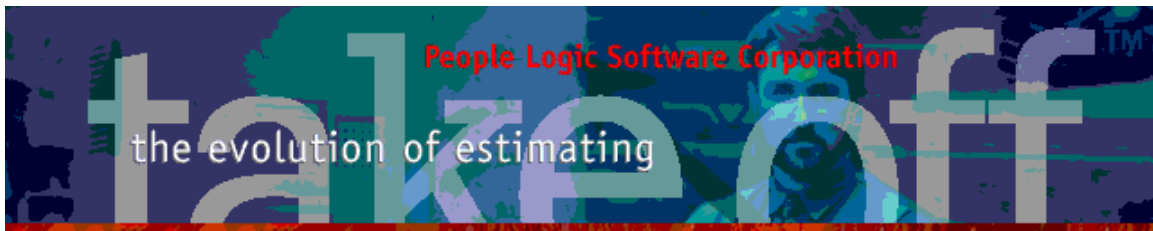
## Catalog

### Product

Option page includes category breakdown similar to takeoff Options page. Values to choice sets may now be done without advancing to MathStuff page. Either use “+” button or right click menu.



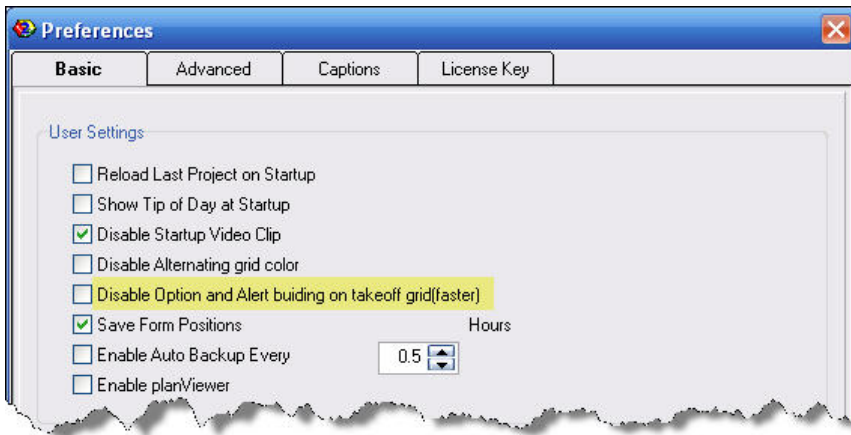


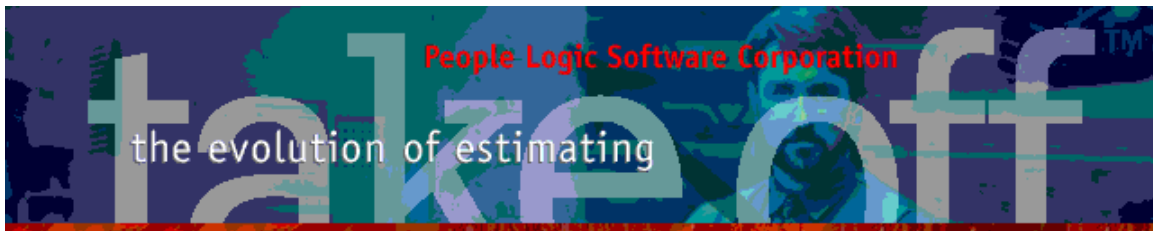


## Edit

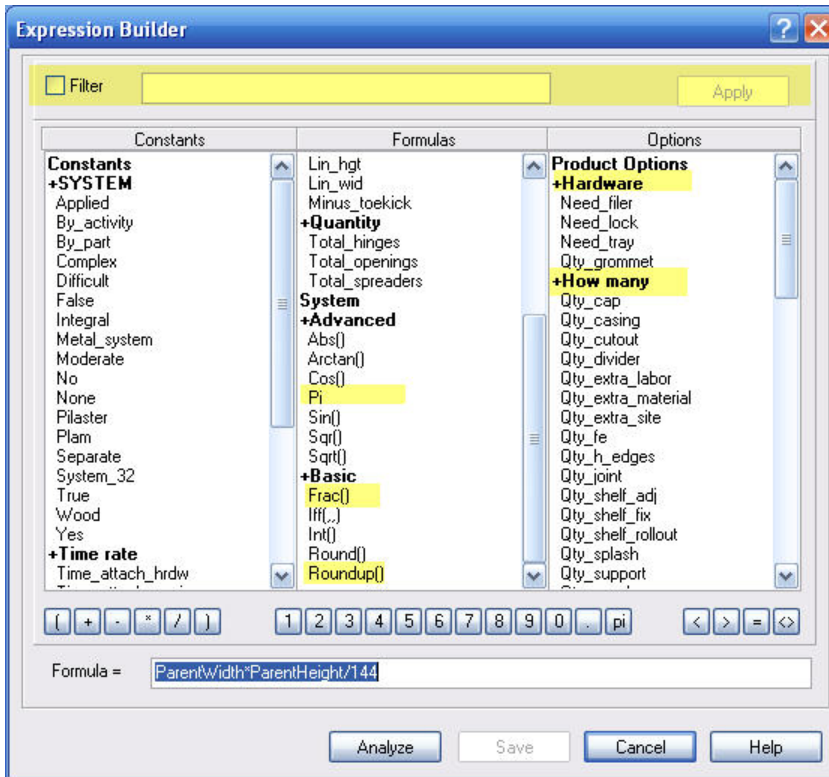
### ***Preferences***

Recalc adds 2 new columns “Options” and “Alert”. Should these fields not be needed or if Recalc speed is affected then this feature may be disabled.





## Math Stuff - Expression builder



### Formulas – Three new functions:

Pi – 3.14159..

Frac() - Returns fractional part of real number.

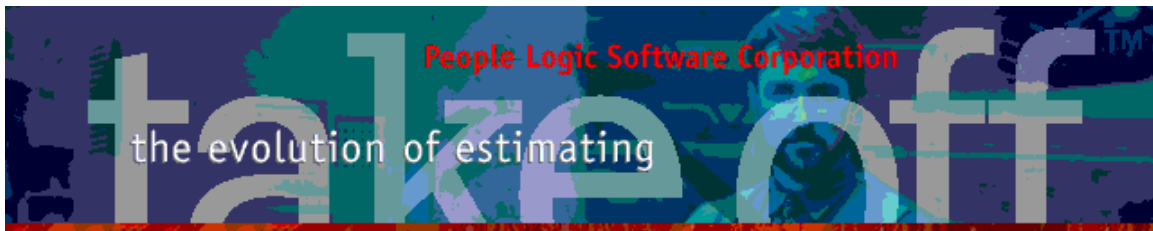
Ex Frac(24.75) returns 0.75

Roundup() - Returns next highest integer part of real number.

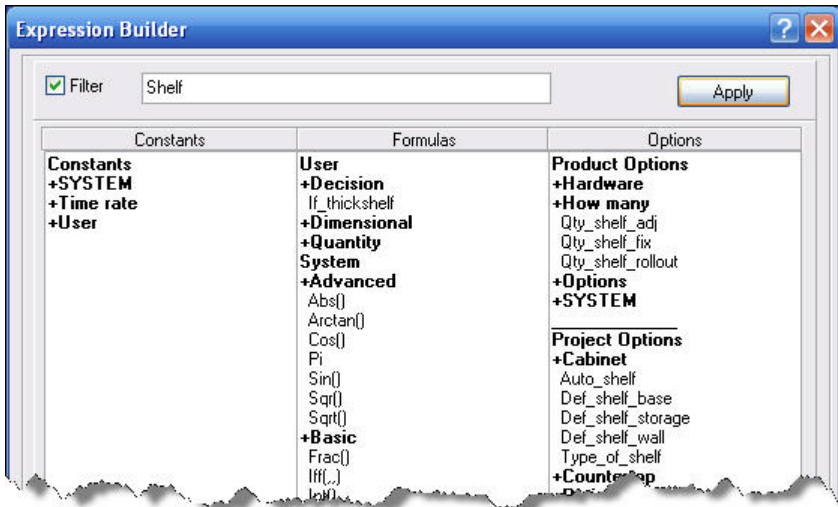
Ex Roundup(24.25) >> 25

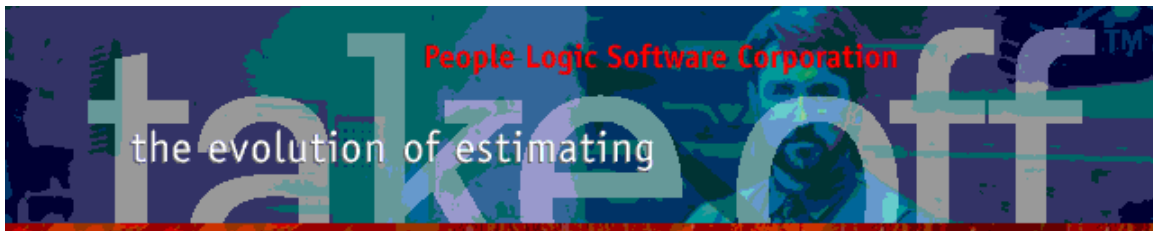
Unlike Round() which rounds to nearest.

### Product Options – Categories added.



**Filtering:** If many MathStuff items are available then *Filtering* may be used to reduce the item selection. Simple *Check* the Filter box and enter a part of the text to use for filtering and finally click the *Apply* button. Remove the Filter by *Unchecking* Filter.





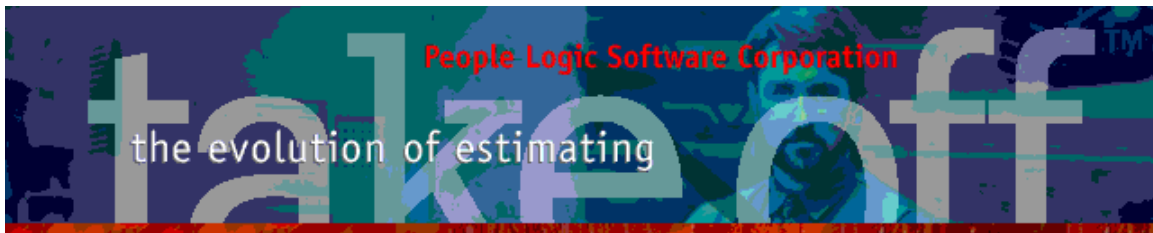
## Excel

Material and Labor have been broken into their 2 named cost divisions.

	A	B	C	D	E	F	G	H	I	J	K
1	<b>Starlight Jewellers</b>	<b>Quantity</b>	<b>Unit of Measure</b>	<b>Cost</b>		<b>Defined Ranges</b>	<b>Cost</b>	<b>Markup</b>			
2	<b>Material</b>										
3	<b>Material-Mfg</b>					Buyout	\$1,000.00				
4	1-0 Wht Melamine G2S	12.00	Sqft.	\$16.24		Edging	\$188.04				
5	1-5/16 x .018 PVC White	12.00	Linft.	\$1.44		Hardware	\$1,014.88				
6	1/2 Baltic beech	169.50	Sqft.	\$309.09		Lumber	\$126.75				
7	1/2 Birch G1S	169.00	Sqft.	\$278.35		Mouldings	\$1,379.25				
8	1/2 Wht Melamine G1S	36.46	Sqft.	\$42.07		Sheet_Goods	\$1,776.62				
9	1/2 x1-1/2mm Solid Birch	7.00	Linft.	\$4.20		<b>Material</b>	\$5,485.55				
10	15/16 x .018 PVC Birch	401.00	Linft.	\$48.12		<b>Material Mfg</b>	\$4,485.55	10.0%			
11	15/16 x .018 PVC White	71.00	Linft.	\$3.55		<b>Material Buyout</b>	\$1,000.00	20.0%			
12	15/16 x 1/8 PVC Birch	256.00	Linft.	\$107.52		Manufacturing	\$1,302.72		ManufacturingQty	65.14	
13	15/16 x 1/8 PVC1	70.33	Linft.	\$23.21		Site	\$4,250.33		SiteQty	106.26	
14	3/4 Birch G1S	219.33	Sqft.	\$399.96		<b>Labor</b>	\$5,553.05		<b>LaborQty</b>	171.39	
15	3/4 Birch G2S (Door grade)	85.00	Sqft.	\$175.00		<b>Labor Mfg</b>	\$1,302.72	30.0%	<b>MfgQty</b>	65.13	
16	3/4 Sheathing	168.42	Sqft.	\$128.79		<b>Labor Site</b>	\$4,250.33	40.0%	<b>SiteQty</b>	106.26	
17	3/4 Wht Melamine G1S	95.22	Sqft.	\$89.62							
18	3/4 Wht Melamine G2S	17.00	Sqft.	\$19.00		<b>Profit</b>		50.0%			
19	8mm Beech Dowell	448.00	Each	\$4.48							
20	Blum 125 deg clip on	16.00	Each	\$36.00		<b>Sub_Contracts</b>	\$450.00	60.0%			
21	Blum Meta filer	4.00	Each	\$32.00							
22	Blum bs230 20	34.00	Pair	\$102.00		<b>Allowances</b>	\$750.00				
23	Blum mounting plate clip on	16.00	Each	\$9.60							
24	Brown backer	75.36	Sqft.	\$23.55		<b>General_Conditions</b>	\$0.00				
25	Casing birch	39.00	Linft.	\$29.25							
26	Chrome 4 inch wire D pull	42.00	Each	\$25.20							
27	Crown 1x4 birch	900.00	Linft.	\$1,350.00							
28	Jamb 2x4 birch	39.00	Linft.	\$126.75							
29	Kenstin cabinet lock	32.00	Each	\$800.00							
30	PL1 3/4MDF Liner	28.58	Sqft.	\$82.39							
31	PL1 GP	128.09	Sqft.	\$184.13							
32	Plastic shelf clips	20.00	Each	\$0.60							
33	White Liner	35.00	Sqft.	\$28.44							
34	Wire grommet 2-1/2	2.00	Each	\$5.00							
35	<b>Material-Buyout</b>										
36	Chairs Red	4.00	Each	\$1,000.00							

takeoff2.xls has also been updated to reflect all new Named Ranges. See project EMPTY for an updated copy(or delete the one in your project and it will be replaced by that from EMPTY)

	A	B	C	D	E	F	G
1							
2	<b>Project Name</b>	Starlight Jewellers					
3	<b>Date</b>	February 15, 2015					
4							
5			<b>Cost</b>	<b>Markup %</b>	<b>Markup \$</b>	<b>Total</b>	
6	<b>Raw costs</b>						
7	Material Mfg		\$4,485.55	10%	\$448.56	\$4,934.11	
8	Material Buyout		\$1,000.00	20%	\$200.00	\$1,200.00	
9	Labor Mfg		\$1,302.72	30%	\$390.82	\$1,693.54	
10	Labor Site		\$4,250.33	40%	\$1,700.13	\$5,950.46	
11	Subtotal				\$2,739.50	\$13,778.10	
12							
13	Profit		\$13,778.10	50%	\$6,889.05	\$20,667.15	
14	Subcontracts		\$450.00	60%	\$270.00	\$720.00	
15	Allowances		\$750.00	0%	\$0.00	\$750.00	
16	General Conditions		\$0.00	0%	\$0.00	\$0.00	
17				0%	\$0.00	\$0.00	
18				0%	\$0.00	\$0.00	
19				0%	\$0.00	\$0.00	
20				0%	\$0.00	\$0.00	
21	<b>Pre tax</b>		<b>\$14,978</b>		<b>\$7,159</b>	<b>\$22,137</b>	
22	Tax1	0%				\$0.00	
23	Tax2	0%				\$0.00	
24	<b>Grand total</b>					<b>\$22,137</b>	
25	Adjustments						
26	<b>Final Price</b>					<b>\$22,137</b>	



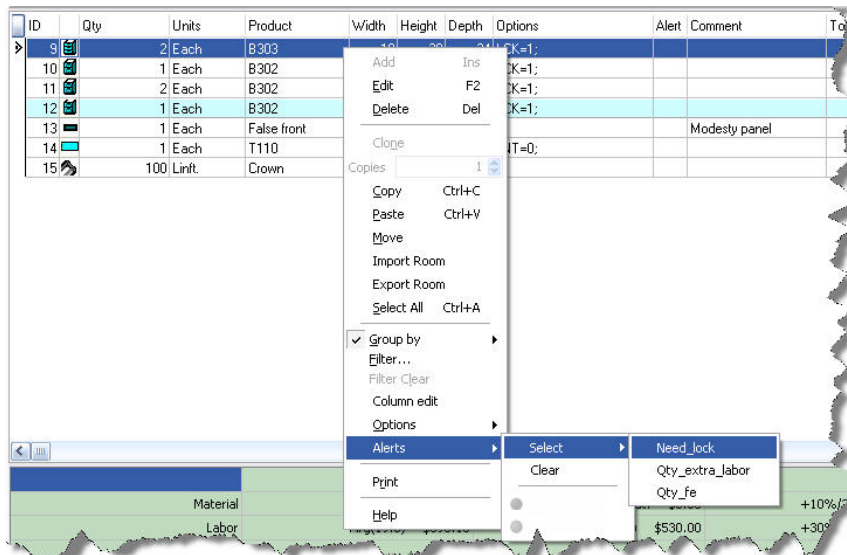
## Takeoff

### Grid Alert

Specific option values may now conditionally trigger either a Red/Green Alert icon on the main takeoff grid. This is useful for checking if certain options have been set or not.

Options	Alert	Comment	TotalCost	Weight
24 LCK=0;	●		\$132.44	101.0
LCK=0; SHLF=1;	●		\$181.40	125.0
			\$20.31	7.0
			\$1,000.00	180.0
22 JNT=0;			\$265.20	121.05
LCK=1;	●		\$553.91	226.20
6		Wall to reception	\$208.85	56.14

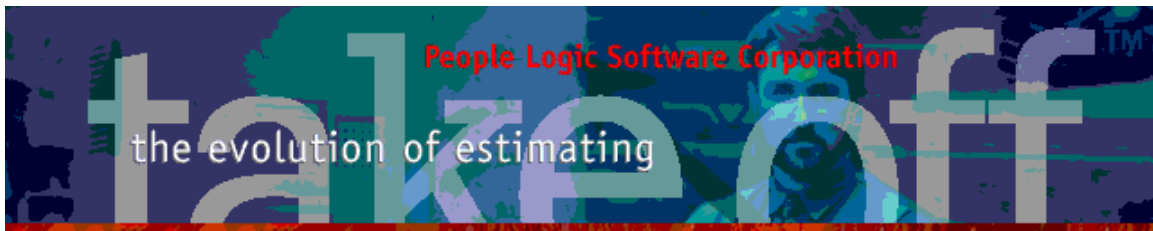
The Alert may be set by first selecting a product item from the takeoff grid. This step is important because it will expose the option you wish to query. Right click and select "Alert", followed by the actual option name.



Set one or both conditions for testing. First select the condition =,<>,< or >. A blank condition results in no test for that condition. If condition "Red" is blank then







## Grid Options

Certain option may now be made visible on the takeoff grid. Rather than showing all options which would be too busy and confusing only those with an Export code to will show in the new “Options” column.

Provide a name or code which will show along with its value(ex LCK=1);

The total with for all options showing is 120 characters.

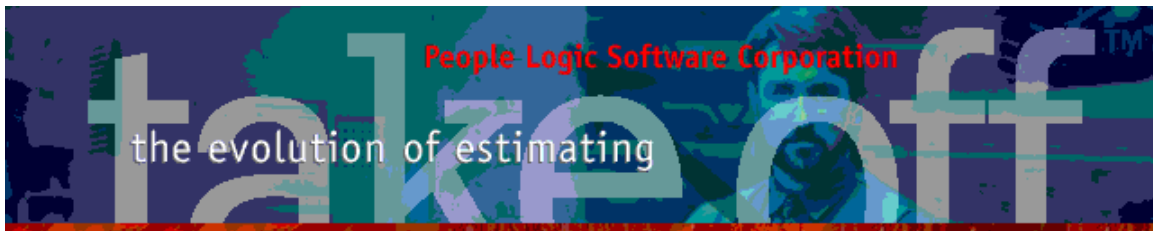
Depth	Options	Comment	Total
12	LCK=0; SHLF=2;		\$21
12			\$2
24	JNT=0;		\$12
24	LCK=0;		\$13
24	LCK=0; SHLF=1;		\$16
4			\$26

*May be disabled in Edit|Preferences.*

## Grid Quantity Labor1/Labor2

Total labor time for Labor1 and Labor2. Named per user caption.

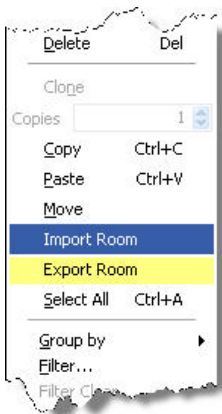
LocationParent	Mfg-Qty	Site-Qty	Production	Shipped
2nd Floor\ Reception	2.83	2.50		
2nd Floor\ Reception	6.18	1.00		
2nd Floor\ Reception	4.07	1.02		
2nd Floor\ Reception	0.00	0.00		
2nd Floor\ Reception	1.75	2.00		



## ***Location Import/Export***

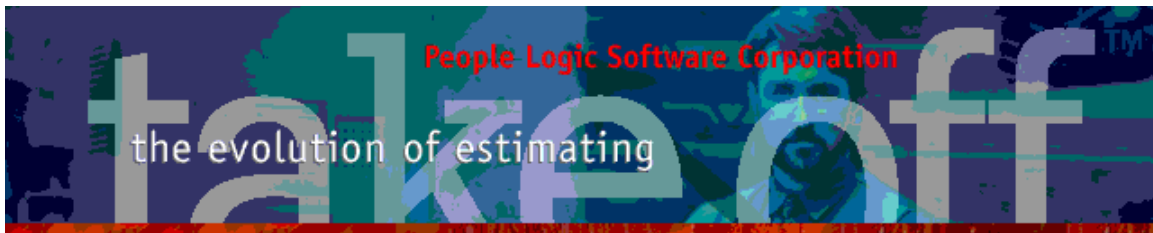
Location import has been expanded to also include fields LocationName, LineID, Reference, Phase2, Revision, Revision2, Milestone1..Milestone8.

Expanding on import from other sources a corresponding Location *export* has been created. This may seem redundant but it actually allows for the possibility of exporting a location from one project and then importing it into another project.





## **Notes**

- Import will drop any items or options not defined in target project.
- Export includes all columns except "Extra Cost".
- A more detailed field spec will be published for power users.
- Drag/drop works for imported files dropped onto grid.

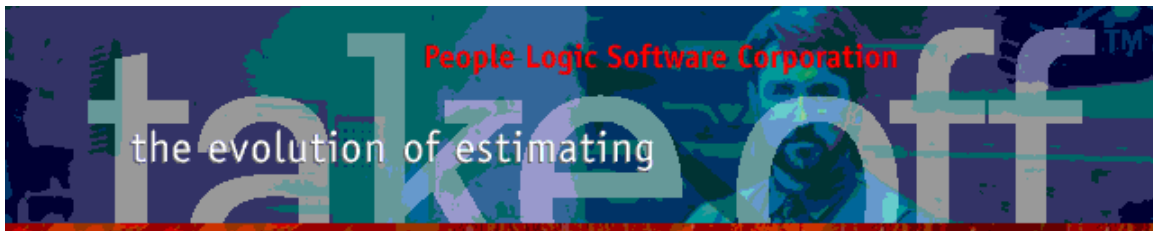


## Material Print

Material images may be disabled from material summary

28.58	33.63	Sqft.	PL1 3/4MDF Liner	\$2.45	\$82.39	93.52
					<b>\$82.39</b>	<b>93.52</b>
<b>Edging</b>						
NetQty	GrossQty	UOM	Description	UnitCost	TotalCost	TotalWt
12.00	12.00	Linft.	1-5/16 x .018 PVC White	\$0.12	\$1.44	0.00
71.00	71.00	Linft.	15/16 x .018 PVC White	\$0.05	\$3.55	0.00
70.33	70.33	Linft.	15/16 x 1/8 PVC1	\$0.33	\$23.21	7.03
					<b>\$28.20</b>	<b>7.03</b>
<b>Hardware</b>						
NetQty	GrossQty	UOM	Description	UnitCost	TotalCost	TotalWt
112.00	112.00	Each	8mm Beech Dowell	\$0.01	\$1.12	0.00
16.00	16.00	Each	Blum 125 deg clip on	\$2.25	\$36.00	14.40
						
00	2.00	Pair	Blum bs230 20	\$3.00	\$6.00	5.00
						
16.00	16.00	Each	Blum mounting plate clip on	\$0.60	\$9.60	3.20

Items Report



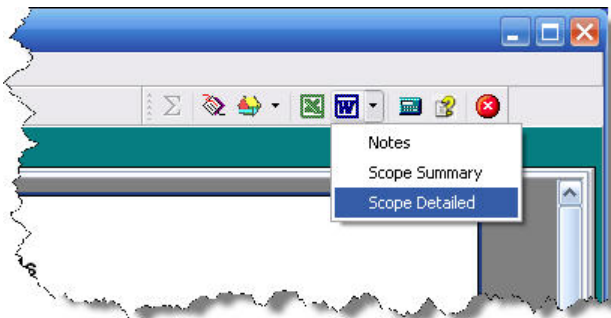
## Word

Word button allows for Scope document generation similar to tkOffice.

Notes – Same as before(or simple click Word button)

Scope Summary – Project scope plus room list.

Scope Detail – Also includes room items.



**SCOPE Detailed**  
Starlight Jewellers

Scope – Put Project Scope here.

**2nd Floor**

myDrawing:	
mySection:	
myStuff:	Include standing and running trim.

Line	Qty	Uom	Item	Dimension	Finish	Comments
0001	700	Linft.	Crown	x x	Default(F)	

**2nd Floor\Office 1**

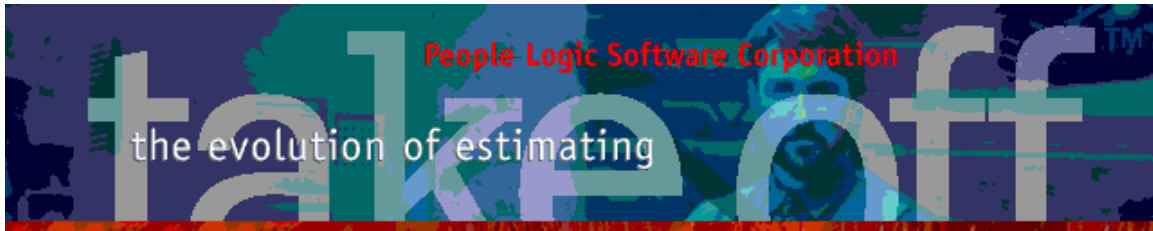
myDrawing:	
mySection:	
myStuff:	Include Crown moulding.

Line	Qty	Uom	Item	Dimension	Finish	Comments
0002	1	Each	B302	30 x 30 x 18	Cab-Birch	
0003	2	Each	B302	30 x 30 x 18	Cab-Birch	
0004	1	Each	B302	30 x 30 x 18	Cab-Birch	
0005	2	Each	B303	18 x 30 x 24	Cab-Birch	
0006	100	Linft.	Crown	x x	Default(F)	
0007	1	Each	False front	24 x 72 x	Cab-Birch	Modesty panel
0008	1	Each	T110	30 x 0 x 74	Default(F)	

**2nd Floor\Office 2**

myDrawing:	
mySection:	
myStuff:	Include Crown moulding.

Line	Qty	Uom	Item	Dimension	Finish	Comments
0009	1	Each	B302	30 x 30 x 18	Cab-Birch	
0010	2	Each	B302	30 x 30 x 18	Cab-Birch	
0011	1	Each	B302	30 x 30 x 18	Cab-Birch	
0012	2	Each	B303	18 x 30 x 24	Cab-Birch	
0013	100	Linft.	Crown	x x	Default(F)	



Any comments are welcome for future enhancements.

Thank you for your ideas

People Logic Software

