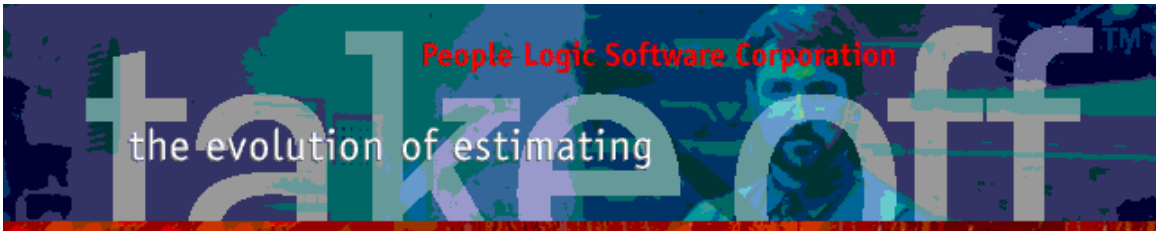


Update Bulletin 2.6.5.4

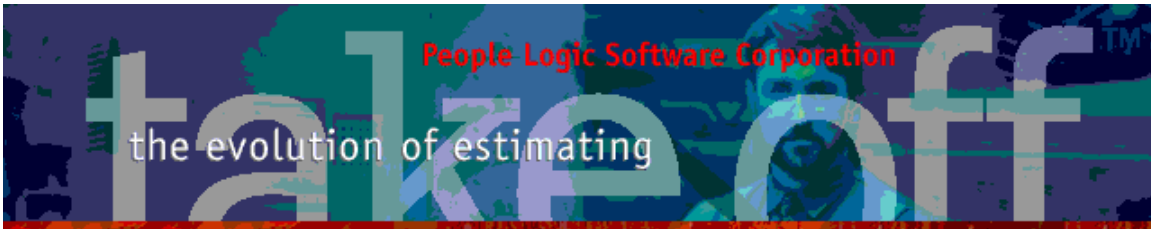
Hello

Many updates of the past year have been requested by various users and have finally made their way to your runtime version. A brief summary of the highlights are shown below.

Admin.....	3
Material	3
Composites.....	3
Supplier Column	4
Supplier popup.....	5
Group	5
Clone	5
Contact	6
Client	6
Web	6
Tab	6
Import	6
Catalog	7
Category Export Field.....	7
Takeoff.....	8
Iconbar	8
Item editor	8
Extra Costs notes	8
Material spec editor	9
Plan viewer.....	9
Adjust Scale.....	9
Detail pane.....	10
Highlight.....	11
Measure polygons	11
Print	11
Roller mode	12
PlanRoom	13
Grid	13
Excel.....	13
Move to.....	14



Multi document printing.....	14
Thumbnail view	15
Menu.....	16
File	16
Restore	16
Edit	17
Project	17
Toolbar	18
Excel.....	18
plExport	18
Report.....	19



Admin

Material

Composites

To better price materials which are combined from other materials, a “Composite” editor has been added. The new material price will be the sum of all its composite materials. A material will be designated as either a raw material(normal) or composite.

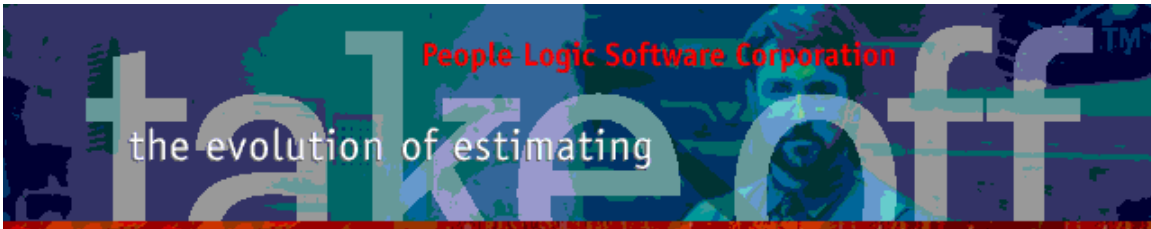
The screenshot shows the 'Edit Material' window for 'PL1 3/4MDF Liner'. The main window has tabs for 'Material', 'Composites', and 'Labor'. The 'Material' tab is active, showing fields for Material name, UOM (Sqft.), Cost (\$2.95), Waste (15%), Supplier, Stock code, UOM2 (Sheets), Conversion (32), and Material type (Shop [10% Overhead]).

The 'Composites' tab is also visible, showing a list of materials used in the composite: Buyout, Edging, Hardware, Lumber, Miscellaneous, Mouldings, and Sheet Goods. A sub-window is open for 'PL1 VG.', showing its own 'Composites' tab with a list of materials: Black Laminate, Brown backer, PL Acid1, PL1 GP, and PL1 VG. (highlighted).

Below the sub-window is a table showing the composite breakdown:

Quantity	UOM	Description	Cost
2	Sqft.	PL1 VG.	\$2.30
1	Sqft.	3/4 MDF	\$0.65

At the bottom of the window, the total cost is calculated as '\$2.95 Composite material per Sqft.'. Red arrows indicate the flow of information: from the 'PL1 VG.' cost in the sub-window to the 'PL1 VG.' row in the table, and from the '3/4 MDF' cost in the table to the total cost calculation. A green arrow points from the 'Cost' field in the main window to the 'PL1 VG.' row in the table.



Changing the unit cost of PL1 VG will affect the unit cost of the above composite.

Material Composites Labor

Material: PL1 VG.

UDM: Sqft.

Cost: As Composite

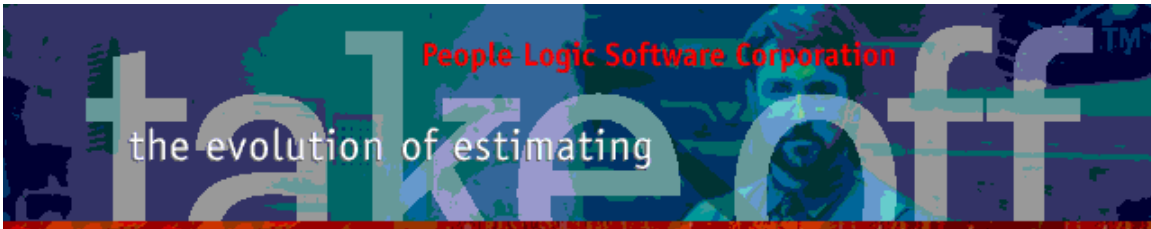
Last updated: January 23, 2011 @ 06:00 AM

Waste: %

Option	Material	UOM	Conversion	UOM2	Cost	Waste	Last Updated	Buyout	Composite Items	La
Starlight Jewellers										
Buyout	PL1 1-0PB Backer	Sqft.	32	Sheets	\$2.30	15%	January 23, 2011			0
Edging	PL1 1-0PB Liner	Sqft.	32	Sheets	\$3.00	15%	January 23, 2011			0
Hardware	PL1 1-0PB PL1	Sqft.	32	Sheets	\$4.00	15%	January 23, 2011			0
Lumber	PL1 1/2MDF Backer	Sqft.	32	Sheets	\$2.50	35%	January 23, 2011			0
Miscellaneous	PL1 1/2MDF Liner	Sqft.	32	Sheets	\$2.30	35%	January 23, 2011			0
Mouldings	PL1 1/2MDF PL1	Sqft.	32	Sheets	\$3.00	35%	January 23, 2011			0
Sheet Goods	PL1 1/2PB Backer	Sqft.	32	Sheets	\$1.85	35%	January 23, 2011			0
Glazing	PL1 1/2PB Liner	Sqft.	32	Sheets	\$3.00	35%	January 23, 2011			0
Layup	PL1 1/2PB PL1	Sqft.	32	Sheets	\$2.30	35%	January 23, 2011			0
Melamine	PL1 3/4MDF Backer	Sqft.	32	Sheets	\$3.20	15%	January 23, 2011			0
Particle Board	PL1 3/4MDF Liner	Sqft.	32	Sheets	\$3.65	15%	April 11, 2011			2
Plastic Laminate	PL1 3/4MDF PL1	Sqft.	32	Sheets	\$3.20	15%	January 23, 2011			0
Plywood	PL1 3/4PB Backer	Sqft.	32	Sheets	\$2.30	15%	January 23, 2011			0
	PL1 3/4PB Liner	Sqft.	32	Sheets	\$3.30	15%	January 23, 2011			0
	PL1 3/4PB PL1	Sqft.	32	Sheets	\$3.40	15%	January 23, 2011			0
	White Liner 1/2PB Backer	Sqft.	32	Sheets	\$1.18	15%	January 23, 2011			0
	White Liner 3/4PB Backer	Sqft.	32	Sheets	\$1.96	15%	January 23, 2011			0
	White Liner 3/4PB Liner	Sqft.	32	Sheets	\$1.65	15%	January 23, 2011			0

Supplier Column

Material Name	UDM	Cost	Waste	Last Updated	Time	Supplier	Compo
Duraflake FR 1 in.	Sqft.	\$1.85	10%	July 16, 2008	6:00:00 AM		
Duraflake FR 1-1/8 in.	Sqft.	\$2.30	10%	July 16, 2008	6:00:00 AM		
Duraflake FR 3/4 in.	Sqft.	\$1.35	10%	July 16, 2008	6:00:00 AM		
Duraflake MR 1 in.	Sqft.	\$1.37	10%	July 16, 2008	6:00:00 AM		
Duraflake MR 1-1/8 in.	Sqft.	\$1.44	10%	July 16, 2008	6:00:00 AM		
Duraflake MR 3/4 in.	Sqft.	\$1.05	10%	July 16, 2008	6:00:00 AM		
Hardboard 1/4	Sqft.	\$0.15	15%	January 9, 2012	3:11:51 PM	ABC Board Supplies	
Hardboard Std 1/4 in	Sqft.	\$0.30	10%	July 16, 2008	6:00:00 AM		
Hardboard Temp. 1/4 in.	Sqft.	\$0.38	10%	July 16, 2008	6:00:00 AM		
MDF 1 in. (Medite)	Sqft.	\$0.95	10%	July 16, 2008	6:00:00 AM		
MDF 1/2 in. (Medite)	Sqft.	\$0.43	10%	July 16, 2008	6:00:00 AM		
MDF 1/4 in. (Medite)	Sqft.	\$0.34	10%	July 16, 2008	6:00:00 AM		



Supplier popup

Supplier: ABC Board Supplies

Stock code: _____

UOM2: Sheets

Conversion: _____ 32 Sqft. per Sheets

Material type: Shop [65% Overhead] Buyout [80% Overhead]

ABC Board Supplies
Attn
123 Elm
Uptown, BC V0V 1V1
CANADA
ph 250-123-4567
fx 250-123-7654
wb www.boardone.com

Group

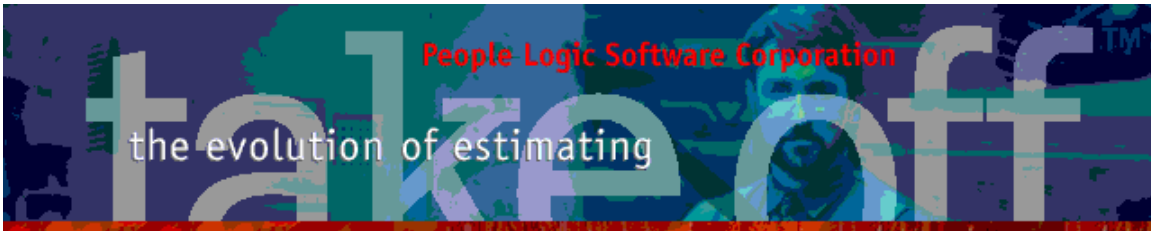
Clone

New material Groups (specifications) can quickly be cloned from existing Groups. Also note the yellow tab which designates the current default Group for Interior. Changing the default is done using the *Set Default* menu.

Option	Material	Labor	Groups	Cost
North Carolina Savings 2011	Item	Material Name	UOM	Cost
Cabinet	2x6	Maple 2x6	Linft.	
Carcass (C)	Back	Wht Melamine G1S 1/2	Sqft.	
Drawer box (C)	Carcass G1S	Wht Melamine G1S 3/4	Sqft.	
Finish panel (F)	Divider Hard Bd	Hardboard 1/4	Sqft.	
Hrdw door (H)	Edging case	0.5mm x 24mm PVC White	Linft.	
Hrdw drawer (H)	Edging lip	19mm x 38mm Solid Birch	Linft.	
Hrdw other (H)	Edging wide	0.5mm x 33	Linft.	
Counter	Interior sealer		Sqft.	
Millwork	Interior stain		Sqft.	
_Misc	Interior topcoat		Sqft.	
	Pegboard	Pegboard 1	Sqft.	
	Shelf G2S	Wht Melam	Sqft.	
	Shelf G2S auto thickness	Wht Melam	Sqft.	
	Spreader	Sheathing p	Sqft.	
	Wall top/bottom	Wht Melam	Sqft.	
	Wooden frame	Maple 1x2	Linft.	
	Wooden guide	Maple 1x1	Linft.	

Add Ins
 Edit F2
 Delete Del
 SetDefault
 Clone
 Copy Ctrl+C
 Paste Ctrl+V
 Select All Ctrl+A
 Copy from Above F4
 Expand Full Outline
 Import...
 Print
 Help F1

Interior / Finish / Hardware / Cab-Alder / Cab-Maple / **Cab-Plam** / Cab-Whimber / Standard-Construct



Contact

Client

Web

A contact website has been added and it may also be used to launch the corresponding site on your browser.

The 'Edit Client' dialog box contains the following fields and values:

- Category: Suppliers
- Name: ABC Board Supplies
- Attn: (empty)
- Address: 123 Elm
- City: Uptown
- State: British Columbia
- Phone: 250-123-4567
- Country: CANADA
- Fax: 250-123-7654
- Zip: V0V 1V1
- Account: (empty)
- Web: www.boardone.com

Buttons: Save, Cancel, Help

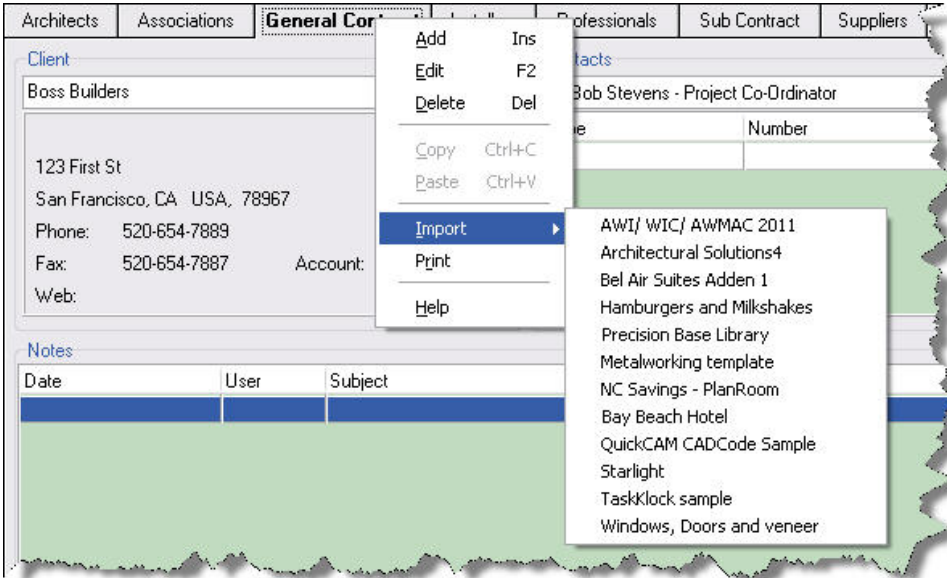
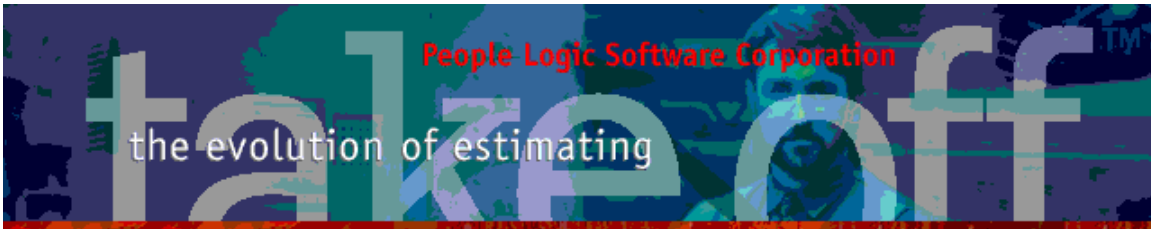
Summary text on the right:

123 Elm
Uptown, BC CANADA, V0V 1V1
Phone: 250-123-4567
Fax: 250-123-7654 Account:
Web: www.boardone.com

Tab

Import

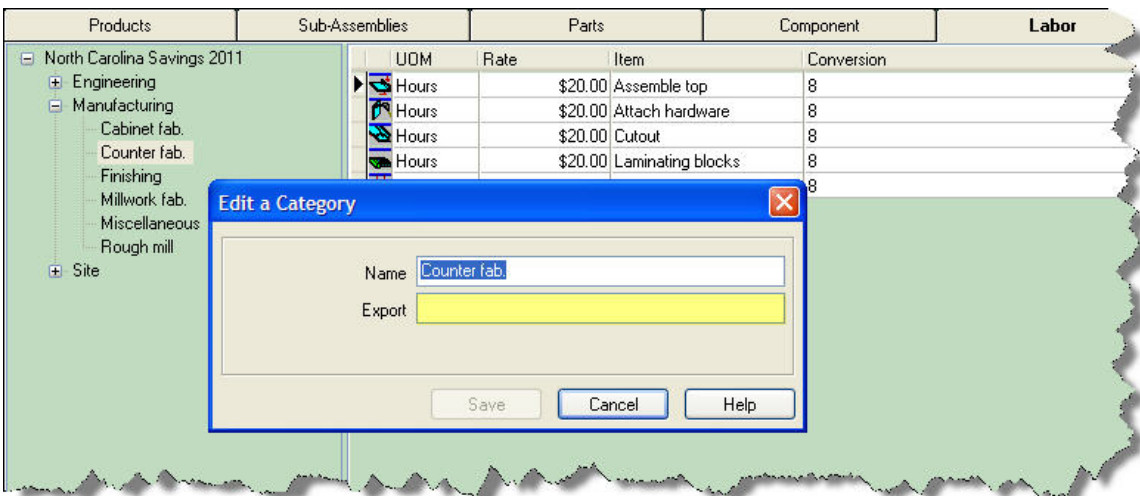
Contact categories may be imported from other projects. Select a category tab, right click, select a project and find a matching category from that project.

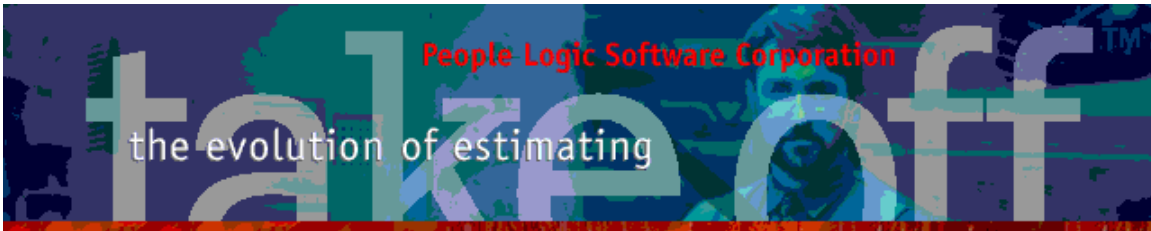


Catalog

Category Export Field

Better integration with TaskKlock has been accomplished by adding a Category Export field throughout the catalog. This simply rounds out existing export fields for Libraries and catalog items. The same has also been done for Material categories.

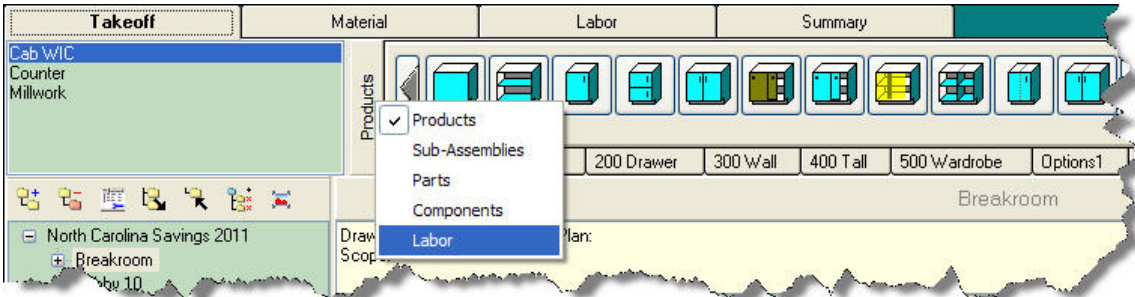




Takeoff

Iconbar

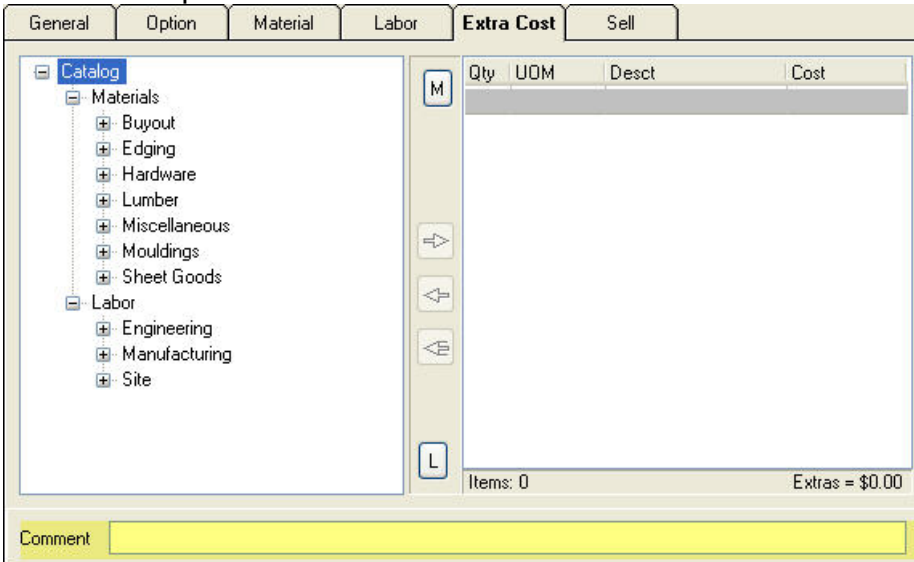
A button has been placed to the left of the icons to show the current state of the iconbar. Clicking on the button will allow changing its state. Catalog iconbar behaves the same. Previously a right click was required.

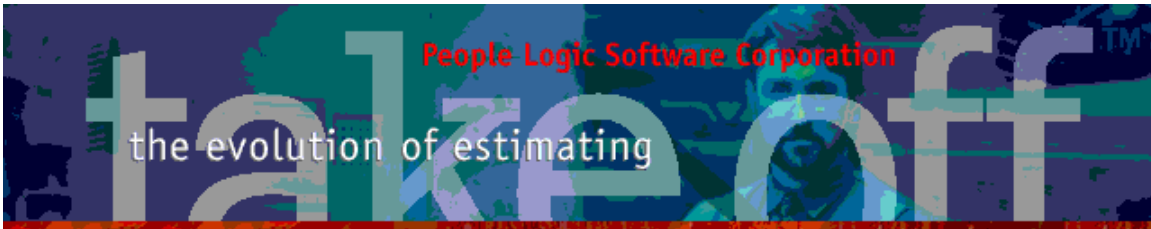


Item editor

Extra Costs notes

Extra cost items have a common comment field. This will also show on the ExtraCost report.

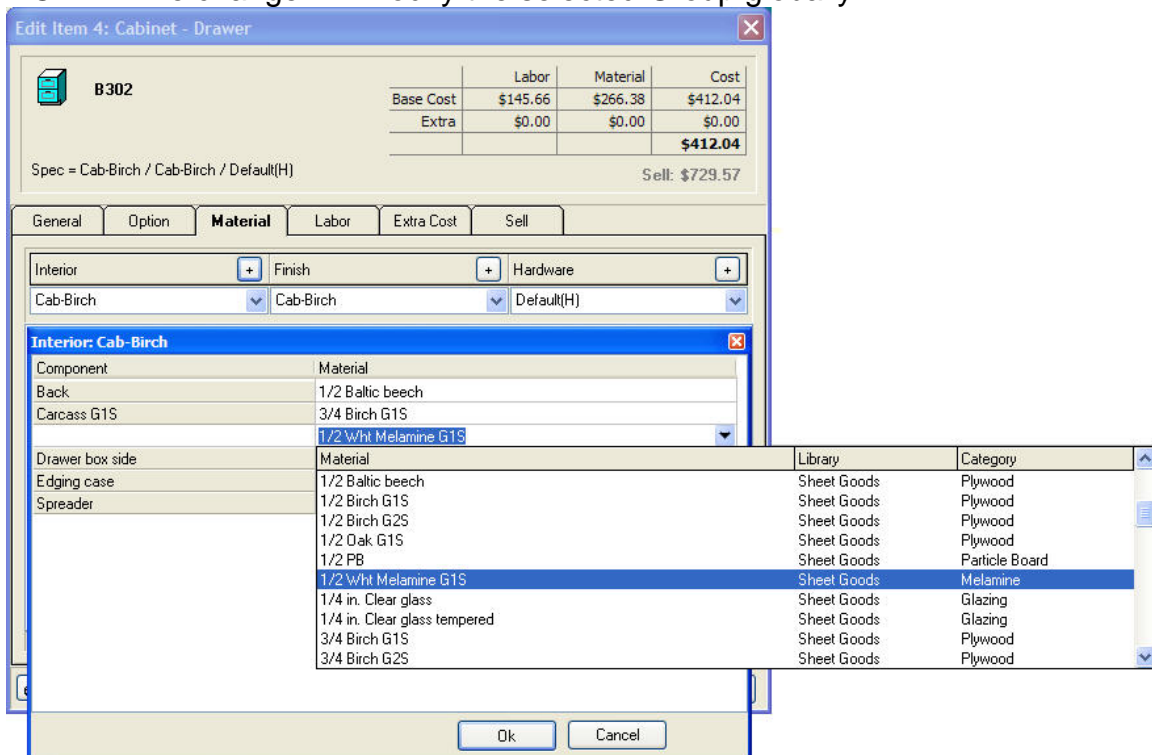




Material spec editor

Assigning correct materials to groups is much simpler because they may now be assigned while editing a takeoff item. Clicking on the “+” buttons next to the Group labels launches a new *mini-spec* editor. This editor selectively only shows the components used by the current product for the selected Group. Material selections are done the same as per Admin|Groups.

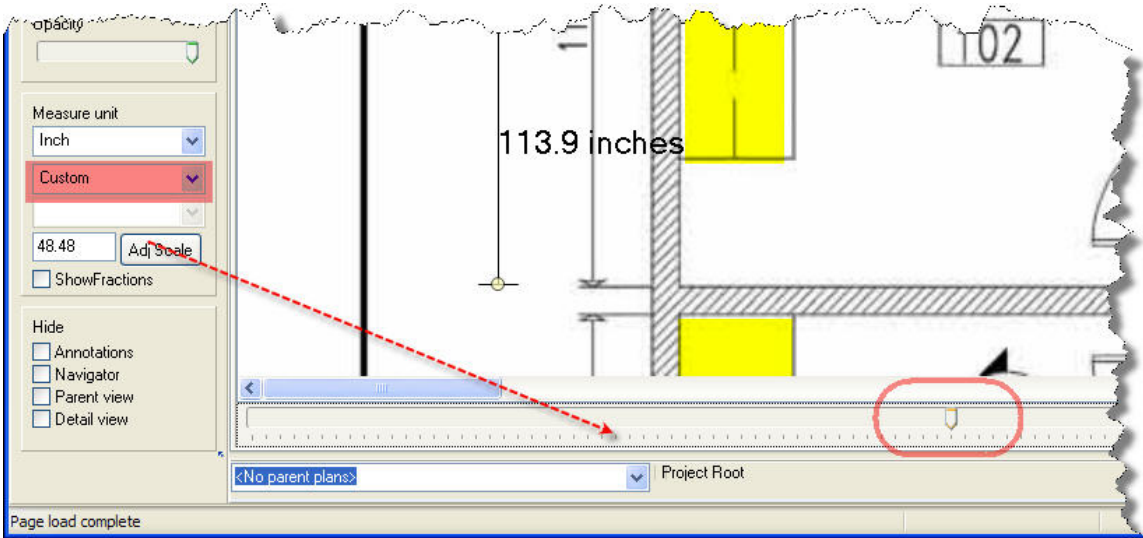
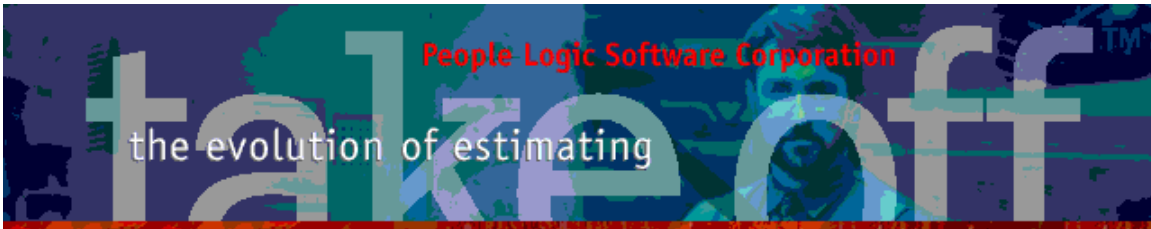
NOTE – The change will modify the selected Group globally.



Plan viewer

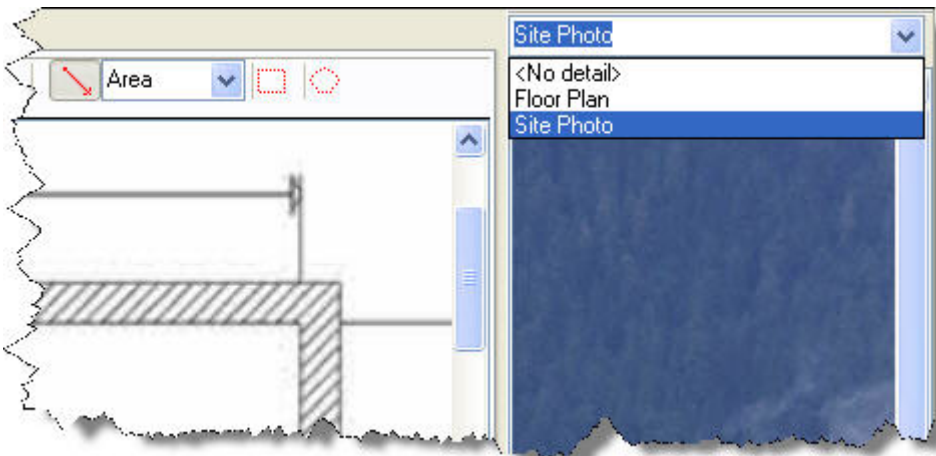
Adjust Scale

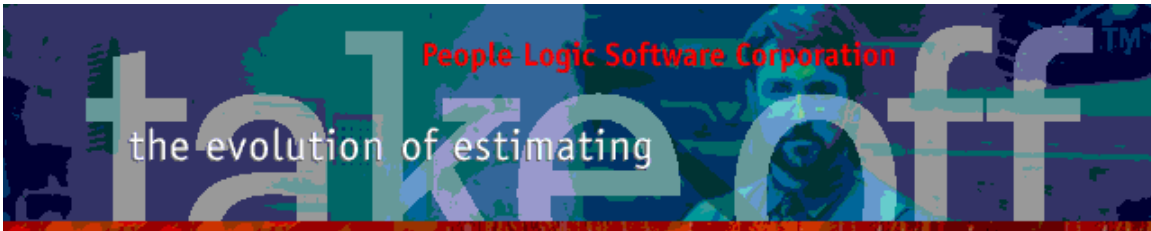
Custom scales can be manually adjusted with a slider control. Select *Custom* scale to activate the *Adj Scale* button. A slider will now show near the bottom which may be moved left/right to decrease/increase the current scale for your current plan. If the slider needs to move beyond its maximum then simply click the *Adj Scale* button twice and a new zero position will be created. Clicking the button once will make the slider disappear as will changing pages.



Detail pane

A third view for details has been added at the right hand side. Detail view can show any of the views belonging to the current location. A splitter bar is used to resize the region between the main view and its detail.





Highlight

Twelve hi-lite colors are available.



Measure polygons

Polygons, rectangles and lengths may be measures based on current scale and units. Regions allow both perimeter or area.



The result always copies to the clipboard for pasting, see statusbar.

CLIPBOARD contains 53.2 in

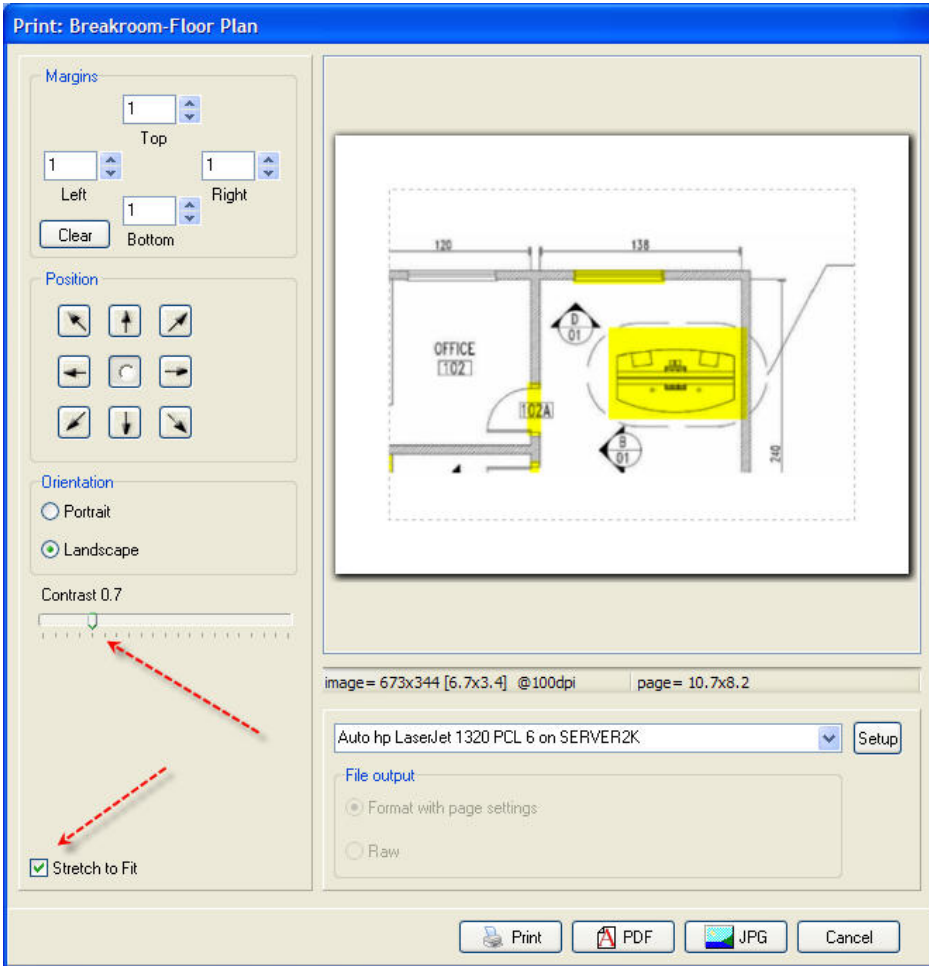
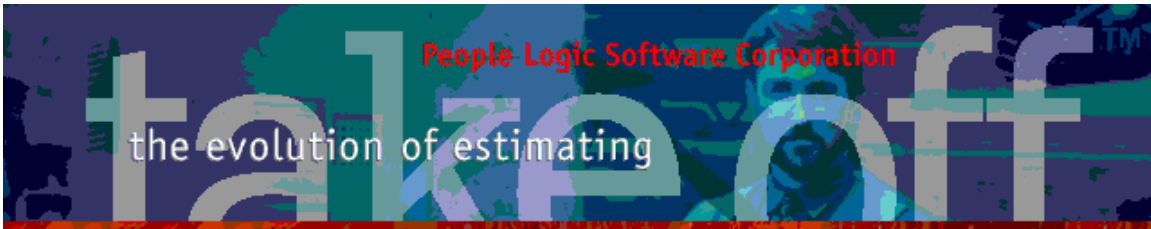
Print

Contrast setting added to darken/lighten images for printing.

Stretch to Fit

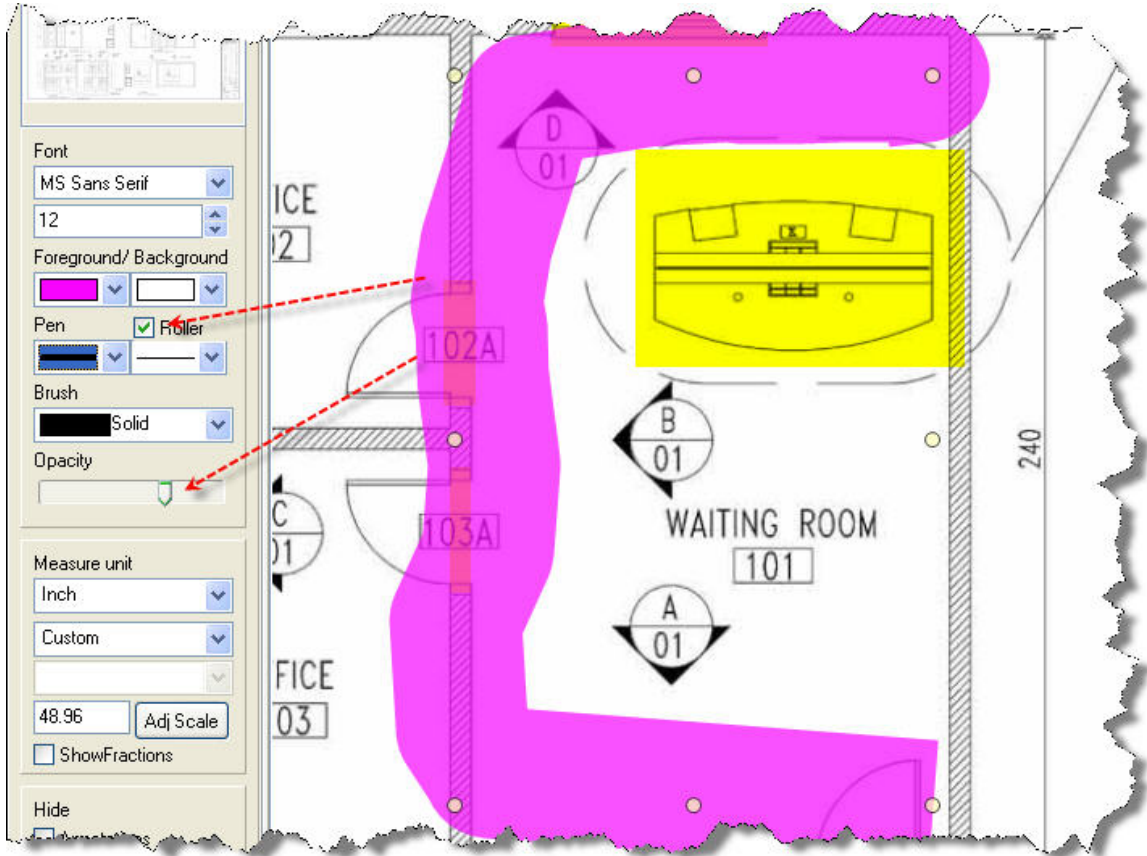
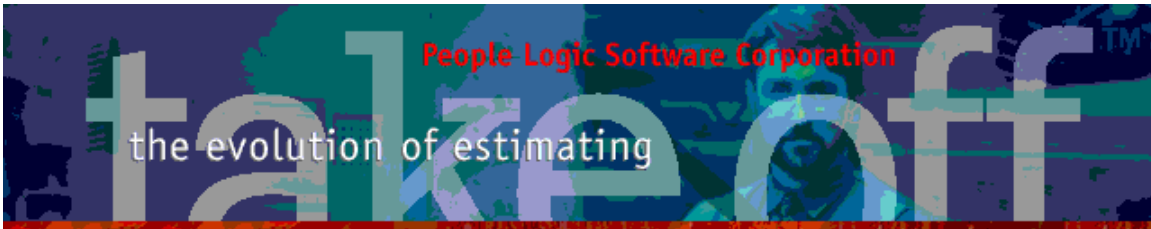
Check – allows entire image to fit within one of the 2 margins.

Unchecked – keeps original size without scaling but may not fit paper.



Roller mode

A wide pen acting like a paint roller has been created. Any drawing tool using a pen will use a *Roller* instead of a pen. All the properties of a pen such a color, width, style brush and opacity will apply.

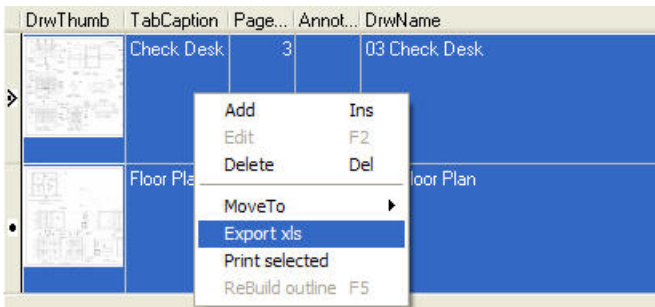


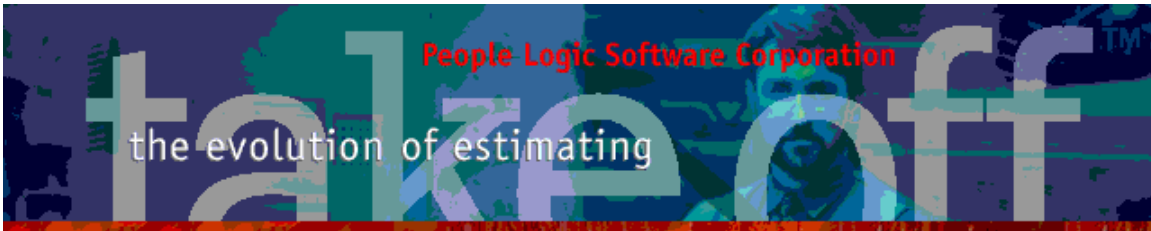
PlanRoom

Grid

Excel

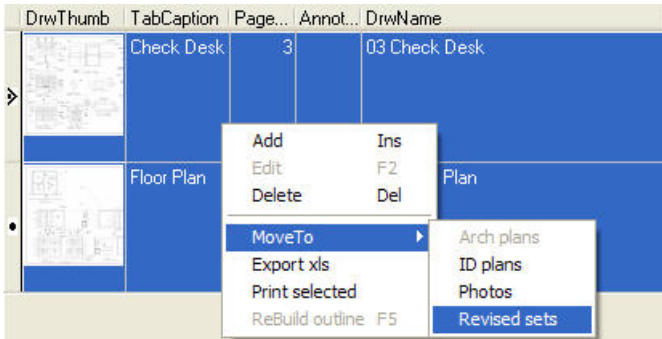
Create an Excel list of selected plans.





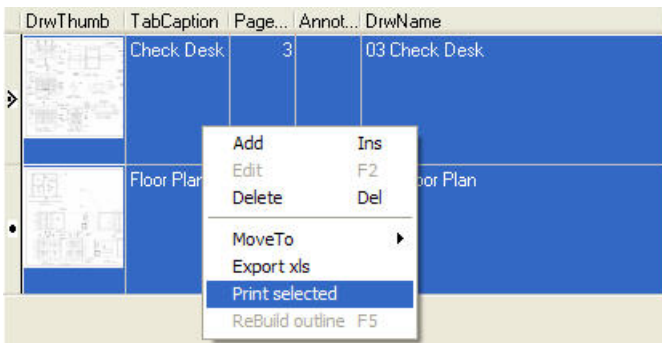
Move to

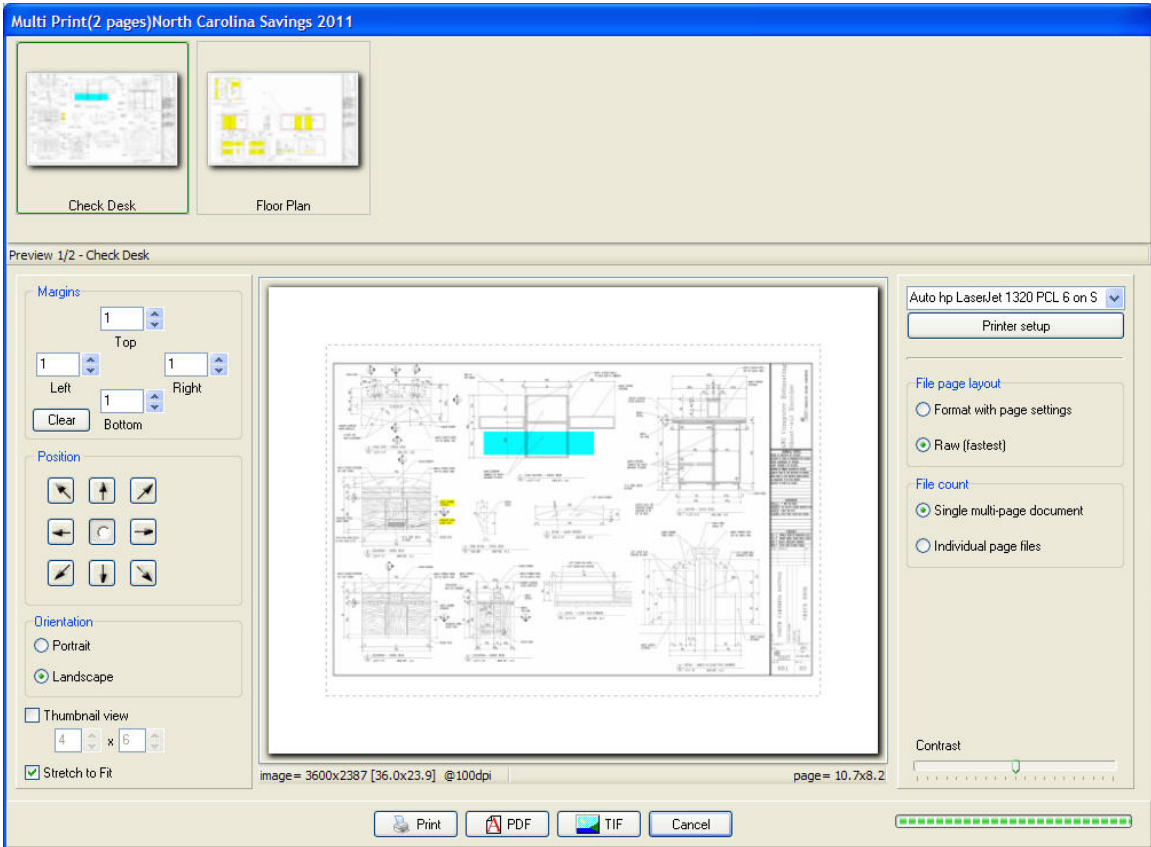
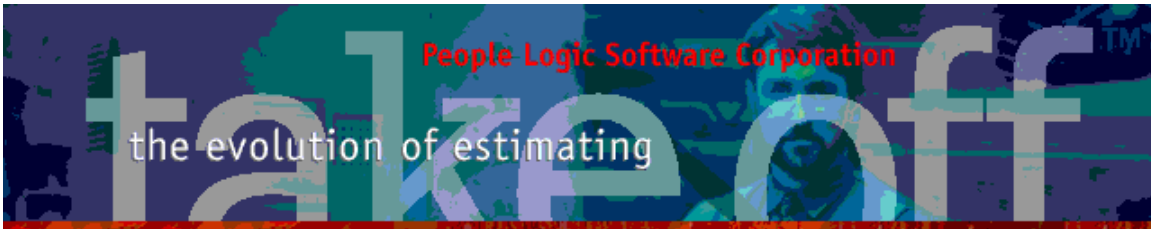
Move selected drawings between plan categories.



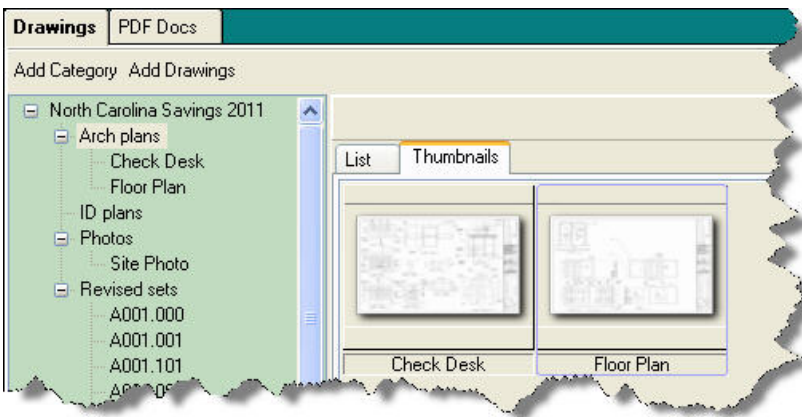
Multi document printing

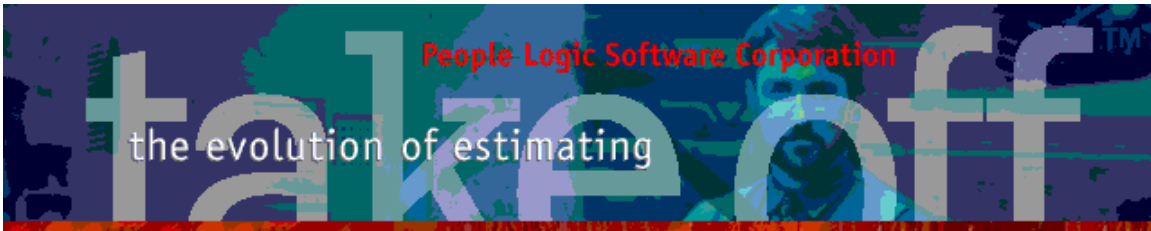
Print a selection of 2 or more plans. Similar to single document printing with PDF and image outputs. Image format is TIF to allow multi-page documents. Thumbnail printing has also been added.





Thumbnail view



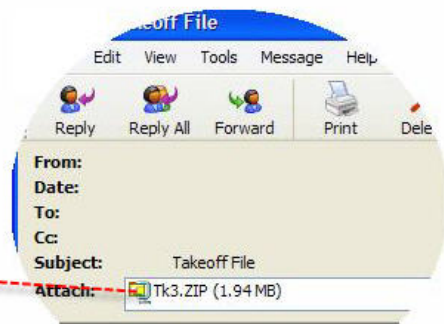
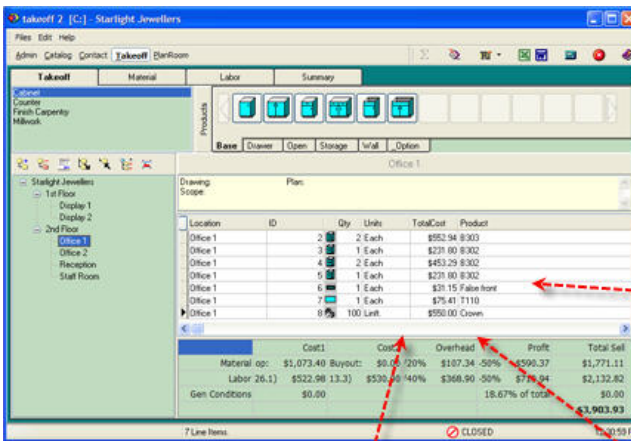


Menu

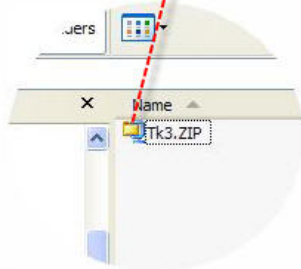
File

Restore

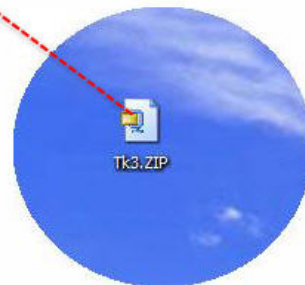
Revert has been labelled as *Restore*. Backup files may now be dragged onto an open takeoff project for the restore process. The currently open project will still be backed up as per original File|Restore.



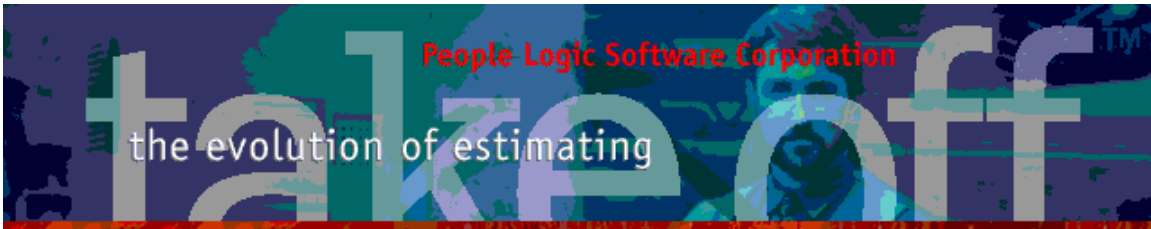
Drag from Email attachment



Drag from File Explorer



Drag from Desktop



Edit

Project

General condition quantity expression may include Project options. This will allow GC to be more dynamic.

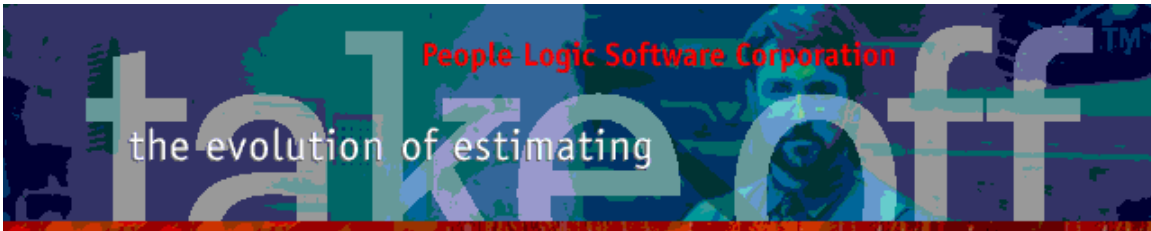
The screenshot displays three overlapping windows from a software application:

- Project settings**: A window with a title bar and a close button. It shows a 'Current bid = \$19,390.69' and several tabs: General, Defaults, Bid Lists, Sub Contracts, Allowances, **Gen Condition**, and Bid Results. Below the tabs is a table with columns 'Amount' and 'Item'.

Amount	Item
\$5.00	minor allowances = 1% of all allowances
\$15.00	buyout add [5 % of all sub contracts]
\$100.54	Shop Supplies [3% of all manuf material costs]
\$0.00	Premium Upcharge
- Edit Gen Condition**: A smaller window with a title bar and close button. It contains a text field labeled 'Expression' with the value 'Iff(Is_premium,2000,0)'. Below the field are 'Test' and 'Save' buttons.
- Expression Builder - Project**: A larger window with a title bar and close button. It features three columns: 'Project costs', 'Project Options', and 'Formulas'.

Project costs	Project Options	Formulas
COST_ALLOWANCES	Auto_shelf	Abs()
COST_LABOR1	Def_counter	Iff(.,)
COST_LABOR2	Def_drawer	Int()
COST_MATERIAL1	Def_shelf_base	Round()
COST_MATERIAL2	Def_shelf_storage	Sqr()
COST_SUBCONTRACTS	Def_shelf_wall	Sqrt()
QTY_LABOR1	Def_splash	
QTY_LABOR2	Def_toekick	
	Is_finishing	
	Is_hang_rail	
	Is_install	
	Is_lip	
	Is_lockable	
	Is_premium	
	Is_solid_top	

 Below the columns is a calculator interface with a numeric keypad and mathematical symbols. At the bottom, there is a 'GenCondition =' field containing 'Iff(Is_premium,2000,0)' and a 'Value' field containing '0'. Buttons for 'Test', 'Save', 'Cancel', and 'Help' are at the bottom right.



Toolbar

Excel

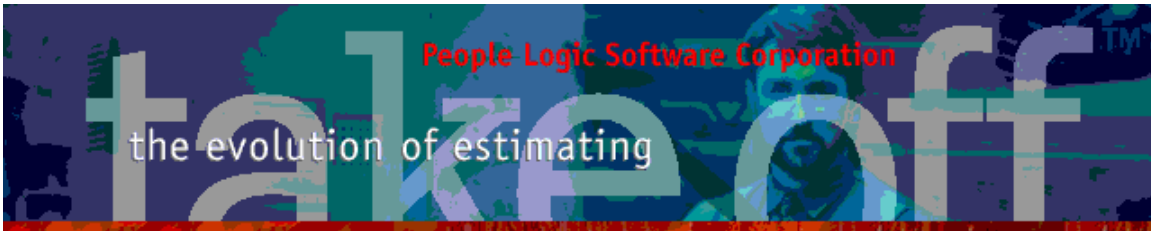
Simple Excel export includes SubContract, Allowances and General Conditions

47				
48	Phase			
49	Phase 1-First Phase: July 4, 2011	530		\$557.50
50				
51	Alternate			
52	Original-First Phase: July 4, 2011	530		\$557.50
53				
54	Sub Contracts			
55	All Supplies	pl tops		\$500.00
56				
57	Allowances			
58				
59	General Conditions			
60	Premium Grade			\$2,500.00
61				
62				
63				
64				

plExport

Contains the following fields:

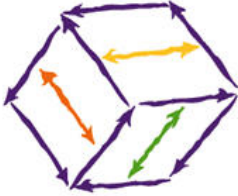
CATEGORY, COMMENTS, DEPTH, HEIGHT, ITEM, LABOR1, LABOR2, LIBRARY, LINEID, MARKUP, MATERIAL1, MATERIAL2, OPTIONS, PHASE, PHASEDATE, PHASETITLE, PROFIT, QTY, QTY_LABOR1, QTY_LABOR2, QTY2, REFERENCE, REVISION, REVISIONDATE, REVISIONTITLE, SELL, SPECIFICATION, SUBCOST, UNITS, UNITS2, WIDTH



Report

Extra cost by Item

People Logic Software
A detailed listing of extra costs for every takeoff item by location



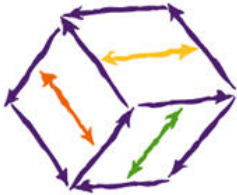
Takeoff: Extra costs by Item 11/01/2012

Lobby 10\Check Desk

Item	Description	Quantity	Unit	Description	Cost
27	101a 1 Door				
	<i>ADD Grommet</i>				
Labor		0.50	Hours	Attach hardware	\$10.00
Material		1.00	Each	Wire grommet 2-1/2	\$0.00
					\$10.00
30	Custom build				
	<i>Plexi Tray</i>				
Labor		6.00	Hours	Assemble Millwork	\$120.00
Material					

Zero Material Exception

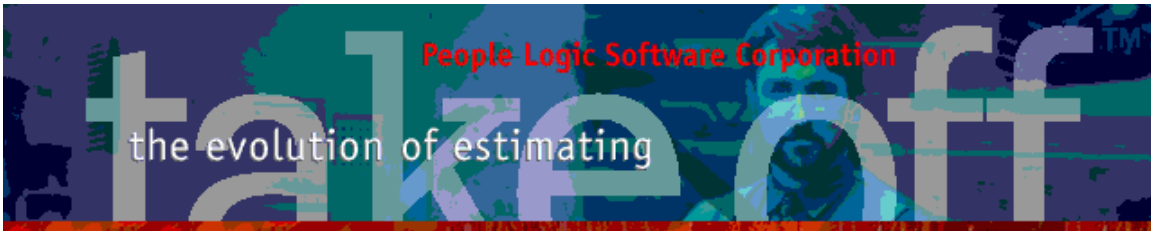
People Logic Software
An exception report listing of all ZERO cost material items required for the estimated project listed by library and category.



Takeoff: +ZERO Material Exception Summary 11/01/2012

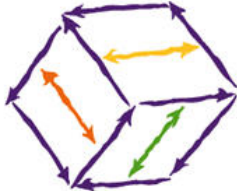
Hardware

Miscellaneous	1.00	Each	Wire grommet 2-1/2	\$0.00
---------------	------	------	--------------------	--------



Composites

People Logic Software
A material table listing composites by library and category.



+Material Composites by Library 11/01/2012

Sheet Goods
Layup

PL1 1/2PB Liner
Updated: December 21, 22:13:47PM
Waste: 15.0%

	2 PL1 VG.	\$1.15/ Sqft.
	1 MDF 3/4	\$0.65/ Sqft.
Cost		\$2.95/ Sqft.

Any comments are welcome for future enhancements.

Thank you
People Logic Software